



# a Better Solution for your Business™

BIXOLON's POS receipt, label, and mobile printers' advanced technologies provide a wide array of innovative solutions for such industries as retail, hospitality, healthcare, banking, post/parcel, and warehousing. BIXOLON's thermal and impact printers intuitive POS software offers extensive customization capabilities. A leader in the global specialty printer market, BIXOLON formed as a mini printer division of Samsung in the 1990's, and spun off in 2002 to form its own entity.



## Retail

Modern retail environments are fiercely competitive

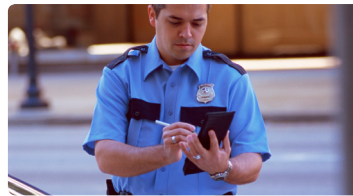
- Point-of-sale receipting
- Coupon printing
- Queue busting
- Mobile receipting
- Shelf edge labelling
- Price markdown
- Returns labelling
- Custom product labelling
- Proof of delivery



## Utilities & Meter Readings

Mobile data collection reduces billing discrepancies

- Meter invoicing
- Mobile meter reading
- Point-of-sale receipting
- Mobile receipting



## Transport Ticketing

On the spot ticket issuing

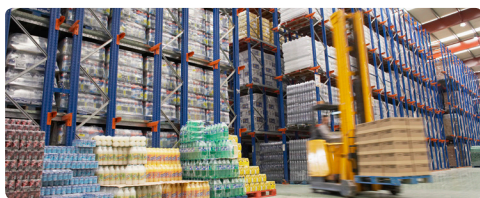
- Parking penalty tickets
- Transport ticketing
- Baggage labelling
- Mobile ticketing
- Mobile receipting



## Hospitality & Leisure

Reducing transaction time is invaluable to any business in today's hospitality environments

- Point-of-sale receipting
- Coupon printing
- Kitchen printing
- Bar receipt printing
- Queue busting
- Mobile receipting
- Ticketing
- Food labelling



## Warehouse & Storage Handling

Quick and accurate labeling is essential in any warehouse and storage handling environment

- Pallet labelling
- RFID labelling and tagging
- Shipment labelling
- Parcel labelling
- Parcel delivery / receipts
- Goods tracking



## Post & Parcel

BIXOLON has extensive experience of working within the post & parcel sector through the worldwide

- Stamp printing
- Parcel labelling
- Proof of delivery / receipts
- Transaction receipting



## Healthcare & Pharmacy

Bar code technology in healthcare vastly increases patient safety, improving productivity, efficiency and accuracy of information

- Patient wristband printing and tracking
- Electronic patient records on portable tablet PCs
- Document, records and case note tracking
- Drug dispensing and labelling
- Sample labelling
- Point-of-sale receipting
- Point-of-care labelling
- RFID labelling and tagging

# PORTFOLIO

MOBILE PRINTERS	 SPP-L3000	 SPP-R410	 SPP-R310	 SPP-R200III	 SPP-R210	
	LABEL PRINTERS	 SLP-TX400	 SLP-T400	 SLP-TX420	 SLP-TX220	 SLP-TX220
 SLP-DX420		 SRP-DX220	 SLP-DL410	 SRP-E770III		
B-GATE & POS PRINTERS		 SRP-Q300Series			 SRP-QE300	 SRP-S300
		 BGT-100P	 SRP-F310II	 SRP-380	 SRP-350plusIII	 SRP-E300
 SRP-350III	 SRP-330II	 STP-103III	 SRP-275III	 SRP-270		
PERIPHERALS		 BCD-2000		 BCD-3000		

**B** Applicable B-gate

## Contents

02	Company Intro / Reference Applications	04 ~ 05	Mobile Printers	09 ~ 13	B-gate & POS Printers	15	Software
03	Portfolio	06 ~ 08	Label Printers	14	Peripherals		

5X  

**The World's No.1**  
**Mobile Receipt Printer Manufacturer**

BIXOLON's success within the mobile printing market has been repeatedly recognised through many industry research reports.

BIXOLON secures its fifth consecutive year as the global leader in the mobile receipt printer market, as quoted by Japanese independent research company Chunichisha.



Chunichisha, Japan (2014-2018), Whole Picture of the Printer Market

**Mobile Printers Accessories**



**SPP-L3000**

Print Characteristics	
Print Method	Direct Thermal
Print Speed	Up to 5 ips (127 mm/sec - Label, Linerless) 12.5% pattern
Print Resolution	203 dpi
Print Width	Up to 72 mm
Sensor	Gap, Black mark, Paper cover open, Label presence
Media Characteristics	
Media Type	Label, Linerless (Optional)
Media Width	25 ~ 80 mm
Media Roll Diameter	Up to 66 mm
Media Thickness	0.07-0.15 mm
Media Inner Core	19mm, 12mm
Supply Method	Easy Paper Loading
Physical Characteristics	
Dimensions (W x D x H)	119.0 x 159.0 x 79.0 mm (4.67 x 6.26 x 3.12 inch)
Weight	Including battery: 694 g (1.53 lbs.) Paper : 257 g (0.57 lbs.)
Battery	7.4 V Li-ion, 2,600 mAh, Rechargeable Charging time: Up to 2.5 hrs
Peeler	Yes
Paper	Yes (Inner core: 19mm)
Display	FSTN LCD (200 x 100 pixels)
Performance Characteristics	
Memory	128 MB SDRAM, 256 MB Flash 256 MB SDRAM, 512 MB Flash (Optional)
Interface	Standard: USB V2.0 HS + Serial Optional: USB V2.0 HS + Serial + Bluetooth <sup>1</sup> / WLAN <sup>2</sup> / Dual Bluetooth <sup>1</sup> + WLAN <sup>2</sup>  Bluetooth <sup>1</sup> : V4.1 Classic & LE WLAN <sup>2</sup> : 802.11a/b/g/n (Infrastructure, Ad-hoc, Wi-Fi Direct, SoftAP) - WEP40/104, WPA1/2(PSK, EAP) * Easy Bluetooth Paring™ via NFC
Environment Characteristics	
Temperature	Operating: -15 ~ 50°C (5 ~ 122°F) Storage: -30 ~ 70°C (-22 ~ 158°F)
Humidity	Operating: 10 ~ 80% RH
Water and Dust	IP54
Drop Rate	2.1 m (7 ft.)
Software	
Emulation	SLCS, BPL-Z™, BPL-C™
Driver / Utility	Windows Driver (Euro Plus/Seagull), Virtual COM USB Driver, Utility Program, LabelArtist™ Mobile(Android,iOS), LabelArtist™-II, Bartender UL, OPOS Driver, Web Driver
SDK / Plugin	iOS SDK, Android SDK, Windows SDK, Linux SDK
Fonts / Graphics / Symbologies	
Fonts	<ul style="list-style-type: none"> <li>• 10 SLCS Resident Bitmap Fonts</li> <li>• One SLCS Resident Scalable Font</li> <li>• 16 BPL-Z™ Resident Bitmap Fonts</li> <li>• One BPL-Z™ Resident Scalable Font</li> <li>• 7 BPL-C™ Resident Bitmap Fonts</li> <li>• 23 Code Page</li> <li>• Unicode supported (UTF-8, UTF-16LE, UTF-16BE)</li> </ul>
Graphics	Supporting user-defined fonts, graphics, formats, layouts and logos
Barcode Symbologies	1D: Codabar, Code 11, Code 39, Code 93, Code 128, EAN-13, EAN-8, Industrial 2-of-5, Interleaved 2-of-5, Logmars, MSI, Plessey, Postnet, GS1 DataBar (RSS-14), Standard 2-of-5, UPC/EAN extensions, UPC-A, UPC-E, IMB 2D: Aztec, Codablock, Code 49, Data Matrix, MaxiCode, MicroPDF417, PDF417, QR code, TLC 39
Accessories	
Standard	Belt Strap, Battery Pack, SMPS, Power Cord, Paper Disk (Inner core : 12mm)
Optional	Shoulder Strap, Single Battery Charger, Quad Battery Charger, Serial/USB Cable, Fixed Serial/USB Cable, Cleaning Pen

# MOBILE PRINTERS

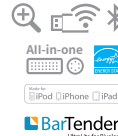


	SPP-R410	SPP-R310	SPP-R200III	SPP-R210
<b>Print Characteristics</b>				
Print Method	Direct Thermal	Direct Thermal	Direct Thermal	Direct Thermal
Print Speed	Up to 90 mm/sec (Receipt) Up to 60 mm/sec (Linerless) 12.5% pattern	Up to 100 mm/sec (Receipt) Up to 80 mm/sec (Linerless) 12.5% pattern	Up to 100 mm/sec (Receipt) Up to 80 mm/sec (Linerless) 12.5% pattern	Up to 90 mm/sec (Receipt) Up to 60 mm/sec (Linerless) 12.5% pattern
Print Resolution	203 dpi	203 dpi	203 dpi	203 dpi
Print Width	Up to 104 mm	Up to 72 mm	Up to 48 mm	Up to 48 mm
Sensor	Paper End, Paper Cover Open, Black Mark (Optional positioning), Gap (Optional)	Paper End, Paper Cover Open, Black Mark (Optional positioning), Gap (Optional)	Paper End, Paper Cover Open	Paper End, Paper Cover Open
<b>Media Characteristics</b>				
Media Type	Receipt, Label, Linerless (Optional)	Receipt, Label, Linerless (Optional)	Receipt, Label, Linerless (Optional)	Receipt, Linerless (Optional)
Media Width	112 mm / 105 mm (Optional)	80 mm	58 mm / 50 mm (Optional)	58 mm
Media Roll Diameter	Up to 57 mm	Up to 50 mm	Up to 40 mm	Up to 30 mm
Media Thickness	0.07 ± 0.005 mm	0.07 ± 0.005 mm	0.07 ± 0.005 mm	0.07 ± 0.005 mm
Supply Method	Easy Paper Loading	Easy Paper Loading	Easy Paper Loading	Easy Paper Loading
<b>Physical Characteristics</b>				
Dimensions (W x D x H)	143.0 x 138 x 66 mm (5.63 x 5.44 x 2.60 inch)	105.0 x 126.0 x 58.0 mm (4.14 x 4.97 x 2.29 inch)	79.5 x 124.5 x 44.1 mm (3.13 x 4.9 x 1.74 inch)	79.0 x 116.0 x 36.5 mm (3.11 x 4.57 x 1.44 inch)
Weight	Including battery: 530 g (1.17 lbs.) Paper: 242 g (0.53 lbs.)	Including battery: 385 g (0.85 lbs.) Including MSR: 405 g (0.9 lbs.) Paper: 133 g (0.29 lbs.)	Including battery: 228 g (0.50 lbs.) Including MSR: 238 g (0.52 lbs.) Paper: 57 g (0.13 lbs.)	Including MSR+battery: 232 g (0.51 lbs.) Paper: 34 g (0.07 lbs.)
Battery	7.4 V Li-ion, 2,600 mAh, Rechargeable Charging time: Up to 4.0 hrs	7.4 V Li-ion, 2,600 mAh, Rechargeable Charging time: Up to 4.0 hrs	7.4 V Li-ion, 1,200 mAh, Rechargeable Charging time: Up to 2.5 hrs	7.4 V Li-ion, 1,200 mAh, Rechargeable Charging time: Up to 2.5 hrs
<b>Performance Characteristics</b>				
Memory	8 MB SDRAM, 4 MB Flash	8 MB SDRAM, 4 MB Flash	8 MB SDRAM, 4 MB Flash	8 MB SDRAM, 4 MB Flash
Interface	Standard: USB V2.0 FS + Serial Optional: USB V2.0 FS + Serial + Bluetooth <sup>1</sup> / WLAN <sup>2</sup>  Bluetooth <sup>1</sup> : V4.1 Classic & LE WLAN <sup>2</sup> : 802.11a/b/g/n (Infrastructure, Ad-hoc, Wi-Fi Direct, SoftAP) - WEP40/104, WPA1/2(PSK, EAP) * Easy Bluetooth Pairing™ via NFC	Standard: USB V2.0 FS + Serial Optional: USB V2.0 FS + Serial + Bluetooth <sup>1</sup> / WLAN <sup>2</sup>  SPP-R310plus USB V2.0 FS + Serial + Bluetooth <sup>3</sup> / WLAN <sup>2</sup>  Bluetooth <sup>1</sup> : V3.0 + EDR WLAN <sup>2</sup> : 802.11b/g/n (Infrastructure, Ad-hoc, Wi-Fi Direct) - WEP40/104, WPA1/2(PSK, EAP) Bluetooth <sup>3</sup> : V4.1 (Classic + LE) WLAN: 802.11a/b/g/n (Infrastructure, Ad-hoc, Wi-Fi Direct, SoftAP) - WEP40/104, WPA1/2(PSK, EAP) * Easy Bluetooth Pairing™ via NFC	Standard: USB V2.0 FS + Serial Optional: USB V2.0 FS + Serial + Bluetooth <sup>3</sup> / WLAN <sup>2</sup>  SPP-R200IIIplus USB V2.0 FS + Serial + Bluetooth <sup>3</sup> / WLAN <sup>2</sup>  Bluetooth <sup>1</sup> : V3.0 + EDR WLAN <sup>2</sup> : 802.11b/g/n (Infrastructure, Ad-hoc, Wi-Fi Direct) - WEP40/104, WPA1/2(PSK, EAP) Bluetooth <sup>3</sup> : V4.1 (Classic + LE) WLAN: 802.11a/b/g/n (Infrastructure, Ad-hoc, Wi-Fi Direct, SoftAP) - WEP40/104, WPA1/2(PSK, EAP) * Easy Bluetooth Pairing™ via NFC	Standard: USB V2.0 FS Optional: USB V2.0 FS + Bluetooth <sup>1</sup> / WLAN <sup>2</sup>  Bluetooth <sup>1</sup> : V3.0+EDR WLAN <sup>2</sup> : 802.11b/g/n (Infrastructure, Ad-hoc, Wi-Fi Direct) - WEP40/104, WPA1/2(PSK, EAP)
<b>Environment Characteristics</b>				
Temperature	Operating: -15 ~ 50°C (5 ~ 122°F) Storage: -30 ~ 70°C (-22 ~ 158°F)	Operating: -15 ~ 50°C (5 ~ 122°F) Storage: -30 ~ 70°C (-22 ~ 158°F)	Operating: -15 ~ 50°C (5 ~ 122°F) Storage: -30 ~ 70°C (-22 ~ 158°F)	Operating: -15 ~ 50°C (5 ~ 122°F) Storage: -30 ~ 70°C (-22 ~ 158°F)
Humidity	Operating: 10 ~ 80% RH	Operating: 10 ~ 80% RH	Operating: 10 ~ 80% RH	Operating: 10 ~ 80% RH
Water and Dust	IP54	IP54	IP43 (IP54 with protective case)	IP54 (with protective case)
Drop Rate	1.8 m (6 ft.)	1.8 m (6 ft.)	2.1 m (7 ft.) / 1.5 m (5 ft.) for MSR model	1.2 m (4 ft.)
<b>Software</b>				
Emulation	BXL / POS	BXL / POS	BXL / POS	BXL / POS
Driver / Utility	Windows Driver, OPOS/JPOS Driver, Linux CUPS Driver, Utility Program, Web Driver	Windows Driver, OPOS/JPOS Driver, Linux / Mac CUPS Driver, Utility Program, Web Driver	Windows Driver, OPOS/JPOS Driver, Linux CUPS Driver, Utility Program, Web Driver	Windows Driver, OPOS/JPOS Driver, Linux CUPS Driver, Utility Program, Web Driver
SDK / Plugin	iOS SDK, Android SDK, Windows SDK, Linux SDK, Xamarin, Cordova	iOS SDK, Android SDK, Windows SDK, Linux SDK, Xamarin SDK, Cordova Plugin	iOS SDK, Android SDK, Windows SDK, Linux SDK, Xamarin, Cordova	iOS SDK, Android SDK, Windows SDK, Linux SDK, Xamarin, Cordova
<b>Fonts / Graphics / Symbolologies</b>				
Character Size	Font A: 12 x 24 Font B: 9 x 17 Font C: 9 x 24 KOR, CHN, JPN: 24 x 24	Font A: 12 x 24 Font B: 9 x 17 Font C: 9 x 24 KOR, CHN, JPN: 24 x 24	Font A: 12 x 24 Font B: 9 x 17 Font C: 9 x 24 KOR, CHN, JPN: 24 x 24	Font A: 12 x 24 Font B: 9 x 17 Font C: 9 x 24 KOR, CHN, JPN: 16
Characters Per Line	Font A: 69 Font B, C: 92 KOR, CHN, JPN: 34	Font A: 69 Font B, C: 92 KOR, CHN, JPN: 24	Font A: 32 Font B, C: 42 KOR, CHN, JPN: 16	Font A: 32 Font B, C: 42 KOR, CHN, JPN: 16
Character Sets	Alphanumeric: 95 Expanded Graphics: 128 x 33 page International: 32	Alphanumeric: 95 Expanded Graphics: 128 x 33 page International: 32	Alphanumeric: 95 Expanded Graphics: 128 x 33 page International: 32	Alphanumeric: 95 Expanded Graphics: 128 x 33 page International: 32
Graphics	Supporting user-defined fonts, graphics, formats, layouts and logos	Supporting user-defined fonts, graphics, formats, layouts, and logos	Supporting user-defined fonts, graphics, formats, layouts and logos	Supporting user-defined fonts, graphics, formats, layouts and logos
Barcode Symbolologies	1D: Codabar, Code 39, Code 93, Code 128, EAN-8, EAN-13, ITF, UPC-A, UPC-E 2D: Aztec, Data Matrix, GS1 Databar, MaxiCode, PDF417, QR code	1D: Codabar, Code 39, Code 93, Code 128, EAN-8, EAN-13, ITF, UPC-A, UPC-E 2D: Aztec, Data Matrix, GS1 Databar, MaxiCode, PDF417, QR code	1D: Codabar, Code 39, Code 93, Code 128, EAN-8, EAN-13, ITF, UPC-A, UPC-E 2D: Aztec, Data Matrix, GS1 Databar, MaxiCode, PDF417, QR code	1D: Codabar, Code 39, Code 93, Code 128, EAN-8, EAN-13, ITF, UPC-A, UPC-E 2D: Aztec, Data Matrix, MaxiCode, PDF417, QR code
<b>Accessories</b>				
Standard	Belt Clip, Battery Pack, Battery Charger, Power Cord, Paper	Belt Clip, Battery Pack, Battery Charger, Power Cord, Paper	Belt Clip, Battery Pack, Battery Charger, Power Cord, Paper	Belt Clip, Battery Pack, Battery Charger, Power Cord, Paper
Optional	Belt Strap, Shoulder Strap, Single Battery Cradle, Quad Battery Charger, Cigarette Lighter Charger, Serial/USB Cable, Cleaning Pen	Belt Strap, Case, Protective Case, Shoulder Strap, Single Battery Cradle, Quad Battery Charger, Cigarette Lighter Charger, Vehicle Holder, Serial/USB Cable, Cleaning Pen	Belt Strap, Case, Protective Case, Shoulder Strap, Battery Pack_V2 (with outer contacts), Single Battery Cradle, Single Docking Cradle, Quad Battery Charger, Quad Docking Cradle, Cigarette Lighter Charger, Vehicle Holder, Serial/USB Cable, Cleaning Pen	Belt Strap, Battery Pack_V2 (with outer contacts), Single Battery Cradle, Single Docking Cradle, Quad Battery Charger, Quad Docking Cradle, Wall Mount (for Quad Battery Charger), Cigarette Lighter Charger, Vehicle Holder, USB Cable, Cleaning Pen
<b>Integrated Card Reader (Optional)</b>				
MSR	-	3 Track (T-DES/DUKPT(Optional))	3 Track (T-DES/DUKPT(Optional))	3 Track (T-DES/DUKPT(Optional))
SCR	-	-	-	-



	SLP-TX400	SLP-T400	SLP-TX420
<b>Print Characteristics</b>			
Print Method	Thermal Transfer, Direct Thermal	Thermal Transfer, Direct Thermal	Thermal Transfer, Direct Thermal
Print Speed	SLP-TX400: Up to 7 ips (178 mm/sec) SLP-TX403: Up to 5 ips (127 mm/sec)	SLP-T400: Up to 6 ips (152 mm/sec) SLP-T403: Up to 4 ips (100 mm/sec)	SLP-TX420: Up to 7 ips (178 mm/sec) SLP-TX423: Up to 5 ips (127 mm/sec)
Print Resolution	SLP-TX400: 203 dpi / SLP-TX403: 300 dpi	SLP-T400: 203 dpi / SLP-T403: 300 dpi	SLP-TX420: 203 dpi / SLP-TX423: 300 dpi
Print Width	SLP-TX400: Up to 108 mm SLP-TX403: Up to 105.7 mm	SLP-T400: Up to 104 mm SLP-T403: Up to 105.7 mm	SLP-TX420: Up to 108 mm SLP-TX423: Up to 105.7 mm
Print Length	6 ~ 1000 mm	6 ~ 1000 mm	6 ~ 2000 mm
Sensor	Transmissive, Reflective (Adjustable), Ribbon-End, Head open	Transmissive, Reflective (Adjustable), Ribbon-End, Head open	Transmissive, Reflective (Adjustable), Ribbon-End, Head open
<b>Media Characteristics</b>			
Media Type	Gap, Black Mark, Notch, Continuous, Fan-Fold	Gap, Black Mark, Notch, Continuous, Fan-Fold	Gap, Black Mark, Notch, Continuous, Fan-Fold
Media Width	25 ~ 112 mm	15 ~ 112 mm	20 ~ 110 mm
Media Roll Diameter	Up to 130 mm	Up to 130 mm	Up to 130 mm
Media Thickness	0.06 ~ 0.20 mm	0.06 ~ 0.20 mm	0.06 ~ 0.20 mm
Supply Method	Easy Paper Loading	Easy Paper Loading	Easy Paper Loading
<b>Ribbon Characteristics</b>			
Ribbon Type	Wax, Wax/Resin, Resin, Outside	Wax, Wax/Resin, Resin, Outside	Wax, Wax/Resin, Resin, Outside
Ribbon Width	33 ~ 110 mm	33 ~ 110 mm	110 mm
Ribbon Length	Up to 300 m	Up to 300 m	Up to 74 m
Core Inner Diameter	25.4 mm, 12.5 mm	25.4 mm, 12.5 mm	12.5 mm
<b>Physical Characteristics</b>			
Dimensions (W x D x H)	214 x 310 x 195 mm (8.42 x 12.20 x 7.67 inch)	214 x 310 x 200 mm (8.42 x 12.20 x 7.87 inch)	200 x 252 x 173 mm (7.87 x 9.92 x 6.81 inch)
Weight	2.85 kg (6.28 lbs.)	2.75 kg (6.06 lbs.)	2.35 kg (5.18 lbs.)
Power	EnergyStar Certified, External Power Adaptor 100-240V AC, 50/60Hz	EnergyStar Certified, External Power Adaptor 100-240V AC, 50/60Hz	EnergyStar Certified, External Power Adaptor 100-240V AC, 50/60Hz
<b>Performance Characteristics</b>			
Memory	64 MB SDRAM, 128 MB Flash	8 MB SDRAM, 2 MB Flash	64 MB SDRAM, 128 MB Flash
Interface	Standard: USB + Serial + Parallel Optional: USB + Serial + Ethernet + WLAN <sup>1</sup>  WLAN <sup>1</sup> : 802.11b/g/n USB dongle type (Optional)	Standard: USB + Serial + Parallel Optional: USB + Serial + Ethernet	Standard: USB + Serial + Parallel Optional: ① USB + Serial + Ethernet + WLAN <sup>1</sup> ② USB + WLAN* + Bluetooth <sup>2</sup>  WLAN <sup>1</sup> : 802.11b/g/n USB dongle type (Optional) Bluetooth <sup>2</sup> : Built-in type, MFI iAP2 certified
<b>Environment Characteristics</b>			
Temperature	Operating: 5 ~ 40°C (41 ~ 104°F), Storage: -20 ~ 60°C (-4 ~ 140°F)	Operating: 5 ~ 40°C (41 ~ 104°F), Storage: -20 ~ 60°C (-4 ~ 140°F)	Operating: 5 ~ 40°C (41 ~ 104°F), Storage: -20 ~ 60°C (-4 ~ 140°F)
Humidity	Operating: 10 ~ 80% RH, Storage: 10 ~ 90% RH	Operating: 10 ~ 80% RH, Storage: 10 ~ 90% RH	Operating: 10 ~ 80% RH, Storage: 10 ~ 90% RH
<b>Software</b>			
Emulation	SLCS, BPL-Z™, BPL-E™	SLCS, BPL-Z™, BPL-E™	SLCS, BPL-Z™, BPL-E™
Driver / Utility	Windows Driver (Euro Plus/Seagull), Linux / Mac CUPS Driver, Virtual COM USB/Ethernet Driver, Unified Label Utility-II, LabelArtist™-II, Bartender UL, OPOS Driver, LabelArtist™ Mobile(Android,iOS), Web Driver	Windows Driver(Euro Plus), Linux / Mac CUPS Driver, Virtual COM USB/Ethernet Driver, Unified Label Utility-II, LabelArtist™-II	Windows Driver (Euro Plus/Seagull), Linux / Mac CUPS Driver, Virtual COM USB/Ethernet Driver, Utility Program, LabelArtist™-II, Bartender UL, OPOS Driver, LabelArtist™ Mobile(Android,iOS), Web Driver
SDK / Plugin	Android SDK, iOS SDK, Windows SDK, Linux SDK	Android SDK, Windows SDK	Android SDK, iOS SDK, Windows SDK, Linux SDK
<b>Fonts / Graphics / Symbologies</b>			
Fonts	<ul style="list-style-type: none"> <li>• 10 SLCS Resident Bitmap Fonts</li> <li>• One SLCS Resident Scalable Font</li> <li>• 16 BPL-Z™ Resident Bitmap Fonts</li> <li>• One BPL-Z™ Resident Scalable Font</li> <li>• 5 BPL-E™ Resident Bitmap Fonts</li> <li>• 23 Code Page</li> <li>• Unicode supported (UTF-8, UTF-16LE, UTF-16BE)</li> </ul>	<ul style="list-style-type: none"> <li>• 10 SLCS Resident Bitmap Fonts</li> <li>• One SLCS Resident Scalable Font</li> <li>• 23 Code Page</li> </ul>	<ul style="list-style-type: none"> <li>• 10 SLCS Resident Bitmap Fonts</li> <li>• One SLCS Resident Scalable Font</li> <li>• 16 BPL-Z™ Resident Bitmap Fonts</li> <li>• One BPL-Z™ Resident Scalable Font</li> <li>• 5 BPL-E™ Resident Bitmap Fonts</li> <li>• 23 Code Page</li> <li>• Unicode supported (UTF-8, UTF-16LE, UTF-16BE)</li> </ul>
Graphics	Supporting user-defined fonts, graphics, formats and logos	Supporting user-defined fonts, graphics, formats and logos	Supporting user-defined fonts, graphics, formats and logos
Barcode Symbologies	1D: Codabar, Code 11, Code 39, Code 93, Code 128, EAN-13, EAN-8, Industrial 2-of-5, Interleaved 2-of-5, Logmars, MSI, Plessey, Postnet, GS1 DataBar (RSS-14), Standard 2-of-5, UPC/EAN extensions, UPC-A, UPC-E, IMB 2D: Aztec, Codablock, Code 49, Data Matrix, MaxiCode, MicroPDF417, PDF417, QR code, TLC 39	1D: Code Bar, Code 39, Code 93, Code 128, EAN-8, EAN-13, IMB, Interleaved 2-of-5, ITF, UCC/EAN-128, UPC-A, UPC-E 2D: Data Matrix, MaxiCode, PDF417, QR code (select two only)	1D: Codabar, Code 11, Code 39, Code 93, Code 128, EAN-13, EAN-8, Industrial 2-of-5, Interleaved 2-of-5, Logmars, MSI, Plessey, Postnet, GS1 DataBar (RSS-14), Standard 2-of-5, UPC/EAN extensions, UPC-A, UPC-E, IMB 2D: Aztec, Codablock, Code 49, Data Matrix, MaxiCode, MicroPDF417, PDF417, QR code, TLC 39
<b>Accessories</b>			
Options	RFID, Peeler, Auto Cutter, External Paper Supply	RFID, Peeler, Auto Cutter(C type only), External Paper Supply	Peeler, Auto Cutter, External Paper Supply
<b>RFID</b>			
Frequency	UHF, 865 ~ 868MHz(EU), 902 ~ 928MHz(KR, USA, CHN)	UHF, 865 ~ 868MHz(EU), 902 ~ 928MHz(KR, USA, CHN)	-
Transmit Power	1W	1W	-
Modulation	ASK	ASK	-
Protocol	UHF EPC Class 1 Gen 2 V1.2/ ISO 18000-6C	UHF EPC Class 1 Gen 2 V1.2/ ISO 18000-6C	-
Auto Cutter	Optional	Optional	-
Tag Pitch	Min 25mm	Min 25mm	-

# LABEL PRINTERS



	SLP-TX220	SLP-DX420	SLP-DX220
<b>Print Characteristics</b>			
Print Method	Thermal Transfer, Direct Thermal	Direct Thermal	Direct Thermal
Print Speed	SLP-TX220: Up to 6 ips (152 mm/sec) SLP-TX223: Up to 4 ips (100 mm/sec)	SLP-DX420: Up to 7 ips (178 mm/sec) SLP-DX423: Up to 5 ips (127 mm/sec)	SLP-DX220: Up to 6 ips (152 mm/sec) SLP-DX223: Up to 4 ips (100 mm/sec)
Print Resolution	SLP-TX220: 203 dpi SLP-TX223: 300 dpi	SLP-DX420: 203 dpi SLP-DX423: 300 dpi	SLP-DX220: 203 dpi SLP-DX223: 300 dpi
Print Width	SLP-TX220: Up to 54 mm SLP-TX223: Up to 56.9 mm	SLP-DX420: Up to 108 mm SLP-DX423: Up to 105.7 mm	SLP-DX220: Up to 54 mm SLP-DX223: Up to 56.9 mm
Print Length	6 ~ 2000 mm	6 ~ 1000 mm	6 ~ 2000 mm
Sensor	Transmissive, Reflective (Adjustable), Head open	Transmissive, Reflective (Adjustable), Head open	Transmissive, Reflective (Adjustable), Head open
<b>Media Characteristics</b>			
Media Type	Gap, Black Mark, Notch, Continuous, Fan-Fold	Gap, Black Mark, Notch, Continuous, Fan-Fold	Gap, Black Mark, Notch, Continuous, Fan-Fold
Media Width	15 ~ 60 mm	20 ~ 110 mm	15 ~ 60 mm
Media Roll Diameter	Up to 130 mm	Up to 130 mm	Up to 130 mm
Media Thickness	0.06 ~ 0.20 mm	0.06 ~ 0.20 mm	0.06 ~ 0.20 mm
Supply Method	Easy Paper Loading	Easy Paper Loading	Easy Paper Loading
<b>Ribbon Characteristics</b>			
Ribbon Type	Wax, Wax/Resin, Resin, Outside	-	-
Ribbon Width	58 mm	-	-
Ribbon Length	Up to 74 m	-	-
Core Inner Diameter	12.5 mm	-	-
<b>Physical Characteristics</b>			
Dimensions (W x D x H)	144 x 252 x 173 mm (5.67 x 9.92 x 6.81 inch)	194 x 243 x 171 mm (7.63 x 9.56 x 6.73 inch)	120 x 230 x 170 mm (4.72 x 9.05 x 6.69 inch)
Weight	1.71 kg (3.77 lbs.)	2.20 kg (4.85 lbs.)	1.36 kg (2.99 lbs.)
Power	EnergyStar Certified, External Power Adaptor 100-240V AC, 50/60Hz	EnergyStar Certified, External Power Adaptor 100-240V AC, 50/60Hz	EnergyStar Certified, External Power Adaptor 100-240V AC, 50/60Hz
<b>Performance Characteristics</b>			
Memory	64 MB SDRAM, 128 MB Flash	64 MB SDRAM, 128 MB Flash	64 MB SDRAM, 128 MB Flash
Interface	Standard: USB + Serial Optional: ① USB + Ethernet + WLAN <sup>1</sup> ② USB + WLAN* + Bluetooth <sup>2</sup>	Standard: USB + Serial + Parallel Optional: ① USB + Serial + Ethernet + WLAN <sup>1</sup> ② USB + WLAN* + Bluetooth <sup>2</sup>	Standard: USB + Serial Optional: ① USB + Ethernet + WLAN <sup>1</sup> ② USB + WLAN* + Bluetooth <sup>2</sup>
	WLAN <sup>1</sup> : 802.11b/g/n USB dongle type (Optional) Bluetooth <sup>2</sup> : Built-in type, MFi iAP2 certified	WLAN <sup>1</sup> : 802.11b/g/n USB dongle type (Optional) Bluetooth <sup>2</sup> : Built-in type, MFi iAP2 certified	WLAN <sup>1</sup> : 802.11b/g/n USB dongle type (Optional) Bluetooth <sup>2</sup> : Built-in type, MFi iAP2 certified
<b>Environment Characteristics</b>			
Temperature	Operating: 5 ~ 40°C (41-104°F) Storage: -20 ~ 60°C (-4-140°F)	Operating: 0 ~ 40°C (32 ~ 104°F) Storage: -20 ~ 60°C (-4 ~ 140°F)	Operating: 0 ~ 40°C (32 ~ 104°F) Storage: -20 ~ 60°C (-4 ~ 140°F)
Humidity	Operating: 10 ~ 80% RH Storage: 10 ~ 90% RH	Operating: 10 ~ 80% RH Storage: 10 ~ 90% RH	Operating: 10 ~ 80% RH Storage: 10 ~ 90% RH
<b>Software</b>			
Emulation	SLCS, BPL-Z™, BPL-E™	SLCS, BPL-Z™, BPL-E™	SLCS, BPL-Z™, BPL-E™
Driver / Utility	Windows Driver (Euro Plus/Seagull), Linux / Mac CUPS Driver, Virtual COM USB/Ethernet Driver, Unified Label Utility-II, LabelArtist™-II, Bartender UL, OPOS Driver, LabelArtist™Mobile(Android,iOS), Web Driver	Windows Driver (Euro Plus/Seagull), OPOS Driver, Linux / Mac CUPS Driver, Virtual COM USB/Ethernet Driver, Unified Label Utility-II, LabelArtist™-II, Bartender UL, LabelArtist™Mobile(Android,iOS), Web Driver	Windows Driver (Euro Plus/Seagull), OPOS Driver, Linux / Mac CUPS Driver, Virtual COM USB/Ethernet Driver, Unified Label Utility-II, LabelArtist™-II, Bartender UL, LabelArtist™Mobile(Android,iOS), Web Driver
SDK / Plugin	Android SDK, iOS SDK, Windows SDK, Linux SDK	Android SDK, iOS SDK, Windows SDK, Linux SDK	Android SDK, iOS SDK, Windows SDK, Linux SDK
<b>Fonts / Graphics / Symbolologies</b>			
Fonts	<ul style="list-style-type: none"> <li>• 10 SLCS Resident Bitmap Fonts</li> <li>• One SLCS Resident Scalable Font</li> <li>• 16 BPL-Z™ Resident Bitmap Fonts</li> <li>• One BPL-Z™ Resident Scalable Font</li> <li>• 5 BPL-E™ Resident Bitmap Fonts</li> <li>• 23 Code Page</li> <li>• Unicode supported (UTF-8, UTF-16LE, UTF-16BE)</li> </ul>	<ul style="list-style-type: none"> <li>• 10 SLCS Resident Bitmap Fonts</li> <li>• One SLCS Resident Scalable Font</li> <li>• 16 BPL-Z™ Resident Bitmap Fonts</li> <li>• One BPL-Z™ Resident Scalable Font</li> <li>• 5 BPL-E™ Resident Bitmap Fonts</li> <li>• 23 Code Page</li> <li>• Unicode supported (UTF-8, UTF-16LE, UTF-16BE)</li> </ul>	<ul style="list-style-type: none"> <li>• 10 SLCS Resident Bitmap Fonts</li> <li>• One SLCS Resident Scalable Font</li> <li>• 16 BPL-Z™ Resident Bitmap Fonts</li> <li>• One BPL-Z™ Resident Scalable Font</li> <li>• 5 BPL-E™ Resident Bitmap Fonts</li> <li>• 23 Code Page</li> <li>• Unicode supported (UTF-8, UTF-16LE, UTF-16BE)</li> </ul>
Graphics	Supporting user-defined fonts, graphics, formats and logos	Supporting user-defined fonts, graphics, formats and logos	Supporting user-defined fonts, graphics, formats and logos
Barcode Symbolologies	1D: Codabar, Code 11, Code 39, Code 93, Code 128, EAN-13, EAN-8, Industrial 2-of-5, Interleaved 2-of-5, Logmars, MSI, Plessey, Postnet, GS1 DataBar (RSS-14), Standard 2-of-5, UPC/EAN extensions, UPC-A, UPC-E, IMB 2D: Aztec, Codablock, Code49, Data Matrix, MaxiCode, MicroPDF417, PDF417, QR Code, TLC39	1D: Codabar, Code 11, Code 39, Code 93, Code 128, EAN-13, EAN-8, Industrial 2-of-5, Interleaved 2-of-5, Logmars, MSI, Plessey, Postnet, GS1 DataBar (RSS-14), Standard 2-of-5, UPC/EAN extensions, UPC-A, UPC-E, IMB 2D: Aztec, Codablock, Code 49, Data Matrix, MaxiCode, MicroPDF417, PDF417, QR code, TLC 39	1D: Codabar, Code 11, Code 39, Code 93, Code 128, EAN-13, EAN-8, Industrial 2-of-5, Interleaved 2-of-5, Logmars, MSI, Plessey, Postnet, GS1 DataBar (RSS-14), Standard 2-of-5, UPC/EAN extensions, UPC-A, UPC-E, IMB 2D: Aztec, Codablock, Code49, Data Matrix, MaxiCode, MicroPDF417, PDF417, QR Code, TLC39
<b>Options</b>			
Options	Peeler, Auto Cutter, External Paper Supply	Peeler, Auto Cutter, External Paper Supply	Peeler, Auto Cutter



BarTender  
Ultimate for Success



	SLP-DL410	SRP-E770III
<b>Print Characteristics</b>		
Print Method	Direct Thermal	Direct Thermal
Print Speed	SLP-DL410: Up to 5 ips (127 mm/sec) SLP-DL413: Up to 5 ips (127 mm/sec)	Up to 5 ips (127 mm/sec)
Print Resolution	SLP-DL410: 203 dpi SLP-DL413: 300 dpi	203 dpi
Print Width	SLP-DL410: Up to 108 mm SLP-DL413: Up to 105.7 mm	Up to 104 mm
Print Length	6 ~ 2000 mm	6 ~ 1000 mm
Sensor	Transmissive, Reflective (Adjustable), Head open	Transmissive, Reflective, Head open
<b>Media Characteristics</b>		
Media Type	Gap, Black Mark, Notch, Continuous, Fan-Fold	Gap, Black Mark, Notch, Continuous, Fan-Fold
Media Width	25 ~ 116 mm	42 ~ 106 mm
Media Roll Diameter	External roll media options up to Ø 150 mm to 205 mm	Up to 130 mm
Media Thickness	0.06 ~ 0.20 mm	0.06 ~ 0.20 mm
Supply Method	-	Easy Paper Loading
<b>Physical Characteristics</b>		
Dimensions (W x D x H)	177 x 150 x 148.5 mm (6.97 x 5.91 x 5.85 inch)	189 x 221 x 171 mm (7.44 x 8.70 x 6.73 inch)
Weight	1.6 kg (3.53 lbs.)	1.47kg (3.24 lbs.)
Power	EnergyStar Certified, Internal Power Adaptor 100-240V AC, 50/60Hz	EnergyStar Certified, External Power Adaptor 100-240V AC, 50/60Hz
<b>Performance Characteristics</b>		
Memory	64 MB SDRAM, 128 MB Flash	64 MB SDRAM, 128 MB Flash
Interface	Standard: USB + WLAN* Optional: ① USB + Ethernet + WLAN¹ ② USB + Ethernet + WLAN¹ + Bluetooth² ③ USB + WLAN¹ + Bluetooth²  WLAN¹: 802.11b/g/n USB dongle type (Optional) Bluetooth²: Built-in type, MFi iAP2 certified	Standard: USB Optional: ① USB + Serial ② USB + Ethernet
<b>Environment Characteristics</b>		
Temperature	Operating: 0 ~ 40°C (32 ~ 104°F) Storage: -20 ~ 60°C (-4 ~ 140°F)	Operating: 0 ~ 40°C (32 ~ 104°F) Storage: -20 ~ 60°C (-4 ~ 140°F)
Humidity	Operating: 10 ~ 80% RH Storage: 10 ~ 90% RH	Operating: 10 ~ 80% RH Storage: 10 ~ 90% RH
<b>Software</b>		
Emulation	SLCS, BPL-Z™, BPL-E™	SLCS, BPL-Z™, BPL-E™
Driver / Utility	Windows Driver (Euro Plus/Seagull), Linux / Mac CUPS Driver, Virtual COM USB/Ethernet Driver, Unified Label Utility-II, LabelArtist™-II, Bartender UL, OPOS Driver, LabelArtist™Mobile(Android,iOS), Web Driver	Windows Driver (Euro Plus/Seagull), OPOS Driver, Linux / Mac CUPS Driver, Virtual COM USB/Ethernet Driver, Unified Label Utility-II, LabelArtist™-II, Bartender UL, LabelArtist™Mobile(Android,iOS), Web Driver
SDK / Plugin	Android SDK, iOS SDK, Windows SDK, Linux SDK	Android SDK, iOS SDK, Windows SDK, Linux SDK
<b>Fonts / Graphics / Symbolologies</b>		
Fonts	<ul style="list-style-type: none"> <li>• 10 SLCS Resident Bitmap Fonts</li> <li>• One SLCS Resident Scalable Font</li> <li>• 16 BPL-Z™ Resident Bitmap Fonts</li> <li>• One BPL-Z™ Resident Scalable Font</li> <li>• 5 BPL-E™ Resident Bitmap Fonts</li> <li>• 23 Code Page</li> <li>• Unicode supported (UTF-8, UTF-16LE, UTF-16BE)</li> </ul>	<ul style="list-style-type: none"> <li>• 10 SLCS Resident Bitmap Fonts</li> <li>• One SLCS Resident Scalable Font</li> <li>• 16 BPL-Z™ Resident Bitmap Fonts</li> <li>• One BPL-Z™ Resident Scalable Font</li> <li>• 5 BPL-E™ Resident Bitmap Fonts</li> <li>• 23 Code Page</li> <li>• Unicode supported (UTF-8, UTF-16LE, UTF-16BE)</li> </ul>
Graphics	Supporting user-defined fonts, graphics, formats and logos	Supporting user-defined fonts, graphics, formats and logos
Barcode Symbolologies	1D: Codabar, Code 11, Code 39, Code 93, Code 128, EAN-13, EAN-8, Industrial 2-of-5, Interleaved 2-of-5, Logmars, MSI, Plessey, Postnet, GS1 DataBar (RSS-14), Standard 2-of-5, UPC/EAN extensions, UPC-A, UPC-E, IMB 2D: Aztec, Codablock, Code 49, Data Matrix, MaxiCode, MicroPDF417, PDF417, QR code, TLC 39	1D: Codabar, Code 11, Code 39, Code 93, Code 128, EAN-13, EAN-8, Industrial 2-of-5, Interleaved 2-of-5, Logmars, MSI, Plessey, Postnet, GS1 DataBar (RSS-14), Standard 2-of-5, UPC/EAN extensions, UPC-A, UPC-E, IMB 2D: Aztec, Codablock, Code49, Data Matrix, MaxiCode, MicroPDF417, PDF417, QR Code, TLC39
<b>Options</b>		
Standard	-	-
Optional	Peeler, Auto Cutter, External Paper Supply, External Power Adaptor	Peeler

# B-GATE & POS PRINTERS



SRP-Q300 Series		SRP-QE300	SRP-S300
<b>Print Characteristics</b>			
Print Method	Direct Thermal	Direct Thermal	Direct Thermal
Print Speed	SRP-Q300, Q300H, Q300B: Up to 220 mm/sec	SRP-QE300: Up to 200 mm/sec	SRP-S300L/LX: Up to 170 mm/sec, SRP-S300R: Up to 300 mm/sec
Print Resolution	SRP-Q300, Q300H, Q300B: 180dpi SRP-Q302, Q302H, Q302B: 203dpi	SRP-QE300: 180dpi SRP-QE302: 203dpi	203 dpi
Print Width	Up to 72mm	Up to 72mm	Up to 80 / 72 / 60 / 48 / 32 mm
Sensor	Paper End, Cover Open	Paper End, Cover Open	Paper End, Black Mark, Cover Open, Paper Taken (Option), Paper Near End (Receipt Only)
<b>Media Characteristics</b>			
Media Type	Receipt	Receipt	SRP-S300L: Sticky, Re-stick SRP-S300LX: Linerless Extreme SRP-S300R: Receipt
Media Width	80 mm	80 mm	83 / 80 / 62 / 58 / 40 mm
Media Roll Diameter	Up to 80 mm	Up to 80 mm	Up to 103 mm
Media Thickness	0.062 ~ 0.075 mm	0.062 ~ 0.075 mm	0.06 ~ 0.09 mm
Supply Method	Easy Paper Loading	Easy Paper Loading	Easy Paper Loading
<b>Physical Characteristics</b>			
Dimensions (W x D x H)	SRP-Q300: 128 x 125 x 125 mm (5.03 x 4.92 x 4.92 inch) SRP-Q300H: 128 x 125 x 160.2 mm (5.03 x 4.92 x 6.30 inch) SRP-Q300B: 128 x 125 x 169.2 mm (5.03 x 4.92 x 6.66 inch)	SRP-QE300: 128 x 125 x 125 mm (5.03 x 4.92 x 4.92 inch)	156 x 210 x 160 mm (6.14 x 8.27 x 6.30 inch)
Weight	SRP-Q300: 1.23 kg (2.71 lbs.) SRP-Q300H: 1.38 kg (3.04 lbs.) SRP-Q300B: 1.72 kg (3.79 lbs.)	SRP-QE300: 1.13 kg (2.49 lbs.)	2.00 kg (4.40 lbs.)
Power	EnergyStar Certified, External Power Adaptor 100-240V AC, 50/60Hz	EnergyStar Certified, External Power Adaptor 100-240V AC, 50/60Hz	Energy Star Certified, External Power Supply Housed Internally (Adaptor 24V/2.5A)
Drawer Port	2 ports (Via y-type adaptor)	2 ports (Via y-type adaptor)	2 Ports (Via y-type adaptor)
Battery	24 V Li-ion, 2,750 mAh, Rechargeable Charging time: Up to 4.0 hrs (SRP-Q300B Only)	-	-
<b>Performance Characteristics</b>			
Memory	-	-	64MB SDRAM, 256 Flash
NV Image Memory	768 Kbytes (Mono)	768 Kbytes (Mono)	256 Kbytes (Mono)
Receive Buffer	4 Kbytes	4 Kbytes	4 Kbytes
User Define Buffer	12 Kbytes	12 Kbytes	12 Kbytes
Interface	SRP-Q300 / Q300B Standard: USB V2.0 FS + Ethernet + 1 USB only Charging port Optional: ① Standard + WLAN <sup>1</sup> ② Standard + Bluetooth <sup>2</sup>  SRP-Q300H 4 USB Host ports (V2.0 HS) + 1 Device port (V2.0 HS) + 1 USB only Charging port + Ethernet + Bluetooth <sup>2</sup> / WLAN <sup>3</sup>  WLAN <sup>1</sup> : 802.11a/b/g/n (2.4G+5G) Bluetooth <sup>2</sup> : V4.2 Classic / LE, Class 1, MFi certified WLAN <sup>3</sup> : 802.11a/ac/b/g/n (2.4G+5G) USB dongle type (Optional)	USB V2.0 FS + Ethernet	Standard: USB V2.0 FS Optional: USB V2.0 FS + Serial / Parallel / Ethernet / WLAN <sup>1</sup> / Bluetooth <sup>2</sup> / Powered USB  SRP-S300Hi (B-gate Hub Interface) 3 USB Host ports (V2.0 HS) + 1 Device port (V2.0 HS) + 1 USB Host with charging + Ethernet + WLAN <sup>3</sup>  WLAN <sup>1</sup> : 802.11a/b/g/n (2.4G+5G) Bluetooth <sup>2</sup> : V4.2 Classic / LE, Class 1, MFi certified WLAN <sup>3</sup> : 802.11a/ac/b/g/n (2.4G+5G) USB dongle type (Optional)
<b>Environment Characteristics</b>			
Temperature	Operating: 0 ~ 40°C (32 ~ 104°F), Storage: -20 ~ 60°C (-4 ~ 140°F)	Operating: 0 ~ 40°C (32 ~ 104°F), Storage: -20 ~ 60°C (-4 ~ 140°F)	Operating: 0 ~ 40°C (32 ~ 104°F), Storage: -20 ~ 60°C (-4 ~ 140°F)
Humidity	Operating: 10 ~ 80% RH, Storage 10 ~ 90% RH	Operating: 10 ~ 80% RH, Storage 10 ~ 90% RH	Operating: 10 ~ 80% RH, Storage: 10 ~ 90% RH
<b>Reliability</b>			
Thermal Print Head (TPH)	150 km	150 km	SRP-S300L/LX: 75 Km, SRP-S300R: 150 Km
Auto Cutter	1.5 Million Cuts	1.5 Million Cuts	SRP-S300L: 1 Million Cuts, SRP-S300R: 3 Million Cuts
<b>Software</b>			
Emulation	BXL / POS	BXL / POS	BXL / POS
Driver / Utility	Windows Driver, OPOS Driver, JPOS Driver, Linux / Mac CUPS Driver, Mac Driver, Virtual COM USB/Ethernet Driver, Utility Program, Web Driver	Windows Driver, OPOS Driver, JPOS Driver, Linux / Mac CUPS Driver, Mac Driver, Virtual COM USB/Ethernet Driver, Utility Program, Web Driver	Windows Driver, OPOS Driver, JPOS Driver, Linux / Mac CUPS Driver, Virtual COM USB/Ethernet Driver, Utility Program, Web Driver
SDK / Plugin	iOS SDK, Android SDK, Windows SDK, Linux SDK, Xamarin, Cordova, Chrome	iOS SDK, Android SDK, Windows SDK, Linux SDK, Xamarin, Cordova, Chrome	iOS SDK, Android SDK, Windows SDK, Linux SDK, Xamarin, Cordova, Chrome
<b>Fonts / Graphics / Symbolologies</b>			
Character Size	Font A: 12 x 24 Font B: 9 x 17 Font C: 9 x 24 KOR, CHN, JPN: 24 x 24	Font A: 12 x 24 Font B: 9 x 17 Font C: 9 x 24 KOR, CHN, JPN: 24 x 24	Font A: 12 x 24 Font B: 9 x 17 Font C: 9 x 24 KOR, CHN, JPN: 24 x 24
Characters Per Line	SRP-Q300, Q300H, Q300B: Font A: 42 Font B, C: 56, KOR, CHN, JPN: 21 SRP-Q302, Q302H, Q302B: Font A: 48 Font B, C: 64, KOR, CHN, JPN: 24	SRP-QE300: Font A: 42 Font B, C: 56, KOR, CHN, JPN: 21 SRP-QE302: Font A: 48 Font B, C: 64, KOR, CHN, JPN: 24	Font A: 48 Font B, C: 64
Character Sets	Alphanumeric: 95, Extended Graphics: 128 x 35 page International: 32 Unicode: UTF-8, UTF-16, UTF-32	Alphanumeric: 95 Extended Graphics: 128 x 35 page International: 32	Alphanumeric: 95 Extended Graphics: 128 x 33 page International: 32
Graphics	Supporting user-defined fonts, graphics, formats and logos	Supporting user-defined fonts, graphics, formats and logos	Supporting User-Defined Fonts, Graphics, Formats and logos
Barcode Symbolologies	1D: Coda Bar, Code 39, Code 93, Code 128, EAN-8, EAN-13, ITF, UPC-A, UPC-E 2D: Data Matrix, GS1-128, GS1 DataBar Stacked / Omnidirectional / Truncated / Limited / Expanded, PDF417, QR code	1D: Coda Bar, Code 39, Code 93, Code 128, EAN-8, EAN-13, ITF, UPC-A, UPC-E 2D: Data Matrix, GS1-128, GS1 DataBar Stacked / Omnidirectional / Truncated / Limited / Expanded, PDF417, QR code	1D: Coda Bar, Code 39, Code 93, Code 128, EAN-8, EAN-13, ITF, UPC-A, UPC-E 2D: Data Matrix, PDF417, QR code
<b>Options</b>			
Options	MSR/SCR Module, Tablet stand (RTS-Q300), Mini LCD Display (BCD-3000)	-	-



	BGT-100P	SRP-F310II	SRP-380
<b>Print Characteristics</b>			
Print Method	Direct Thermal	Direct Thermal (Front Exit)	Direct Thermal
Print Speed	BGT-100P: Up to 300 mm/sec, BGT-102P: Up to 270 mm/sec	Up to 350 mm/sec	Up to 350 mm/sec
Print Resolution	BGT-100P: 180 dpi BGT-102P: 203 dpi	SRP-F310II: 180 dpi (512dots), SRP-F312II: 203 dpi (576dots) SRP-F313II: 203 dpi (640dots)	SRP-380: 180 dpi SRP-382: 203 dpi
Print Width	Up to 72 mm	SRP-F310II: Up to 72 mm, SRP-F312II: Up to 72 mm SRP-F313II: Up to 80 mm	Up to 72 mm
Sensor	Paper End, Paper Near End, Cover Open	Paper End, Paper Near End, Cover Open	Paper End, Paper Near End, Cover Open
<b>Media Characteristics</b>			
Media Type	Receipt	Receipt	Receipt
Media Width	80 mm, Optional 58 mm (N type)	80 / 83 mm	80 / 58 mm
Media Roll Diameter	Up to 83 mm	Up to 105 mm	Up to 83 mm
Media Thickness	0.062 ~ 0.075 mm	0.062 ~ 0.075 mm	0.062 ~ 0.075 mm
Supply Method	Easy Paper Loading	Easy Paper Loading	Easy Paper Loading
<b>Physical Characteristics</b>			
Dimensions (W x D x H)	145 x 200 x 146 mm (5.70 x 7.87 x 5.74 inch)	154 x 203 x 148 mm (6.06 x 7.99 x 5.82 inch)	147 x 200 x 148 mm (5.79 x 7.87 x 5.82 inch)
Weight	1.56 kg(3.43 lbs.)	2.00 kg (4.40 lbs.)	1.56 kg(3.43 lbs.)
Power	EnergyStar Certified, External Power Adaptor 100-240V AV, 50/60Hz	EnergyStar Certified, External Power Supply Housed Internal Adaptor (24V/2.5A, 50/60Hz)	EnergyStar Certified, External Power Adaptor 100-240V AV, 50/60Hz
Drawer Port	2 ports (Via y-type adaptor)	2 ports (Via y-type adaptor)	2 ports (Via y-type adaptor)
<b>Performance Characteristics</b>			
Memory	64MB SDRAM, 256 Flash	-	-
NV Image Memory	768 Kbytes (Mono)	768 Kbytes (Mono)	768 Kbytes (Mono)
Receive Buffer	4 Kbytes	4 Kbytes	4 Kbytes
User Define Buffer	12 Kbytes	12 Kbytes	12 Kbytes
Interface	3 USB Host ports(V2.0 HS) + 1 device port (V2.0 HS) + 1 USB Host with charging+ Ethernet + Bluetooth <sup>1</sup> + WLAN <sup>2</sup>  Bluetooth <sup>1</sup> : V4.2 Classic / LE, Class 1, MFi certified WLAN <sup>2</sup> : 802.11a/ac/b/g/n(2.4G+5G) USB dongle type(Optional)	Standard: USB V2.0 FS +Ethernet Optional: USB V2.0 FS +Ethernet + Serial / Dual Serial / Parallel / WLAN <sup>1</sup> / Bluetooth <sup>2</sup> / Powered USB  SRP-F310IIHi (B-gate Hub Interface) 3 USB Host ports(V2.0 HS) + 1 Device port (V2.0 HS) + 1 USB Host with charging + Ethernet + WLAN <sup>3</sup>  WLAN <sup>1</sup> : 802.11a/b/g/n(2.4G+5G) Bluetooth <sup>2</sup> : V4.2 Classic / LE, Class 1, MFi certified WLAN <sup>3</sup> : 802.11a/ac/b/g/n(2.4G+5G) USB dongle type(Optional)	Standard: USB V2.0 FS Optional: USB V2.0 FS + Ethernet / Serial / Dual Serial / WLAN <sup>1</sup> / Bluetooth <sup>2</sup> / Powered USB  WLAN <sup>1</sup> : 802.11a/b/g/n(2.4G+5G) Bluetooth <sup>2</sup> : V4.2 Classic / LE, Class 1, MFi certified
<b>Environment Characteristics</b>			
Temperature	Operating: 0 ~ 40°C (32 ~ 104°F), Storage: -20 ~ 60°C (-4 ~ 140°F)	Operating: 0 ~ 40°C (32 ~ 104°F), Storage: -20 ~ 60°C (-4 ~ 140°F)	Operating: 0 ~ 40°C (32 ~ 104°F), Storage: -20 ~ 60°C (-4 ~ 140°F)
Humidity	Operating: 10 ~ 80% RH, Storage 10 ~ 90% RH	Operating: 10 ~ 80% RH, Storage 10 ~ 90% RH	Operating: 10 ~ 80% RH, Storage 10 ~ 90% RH
<b>Reliability</b>			
Thermal Print Head (TPH)	150 km	250 km	250 km
Auto Cutter	1.8 Million Cuts	3 Million Cuts	3 Million Cuts
<b>Software</b>			
Emulation	BXL / POS	BXL / POS	BXL / POS
Driver / Utility	Windows Driver*, JPOS Driver*, Utility Program, Web Driver* * Internal printer only	Windows Driver, OPOS Driver, JPOS Driver, Linux / Mac CUPS Driver, Virtual COM USB/Ethernet Driver, Utility Program, Web Driver	Windows Driver, OPOS Driver, JPOS Driver, Linux / Mac CUPS Driver, Virtual COM USB/Ethernet Driver, Utility Program, Web Driver
SDK / Plugin	iOS SDK, Android SDK, Windows SDK	iOS SDK, Android SDK, Windows SDK, Linux SDK, Xamarin, Cordova, Chrome	iOS SDK, Android SDK, Windows SDK, Windows Runtime SDK, Linux SDK, Xamarin, Cordova, Chrome
<b>Fonts / Graphics / Symbologies</b>			
Character Size	Font A: 12 x 24 Font B: 9 x 17 Font C: 9 x 24 KOR, CHN, JPN: 24 x 24	Font A: 12 x 24 Font B: 9x17 Font C: 9 x 24 KOR, CHN, JPN: 24 x 24	Font A: 12 x 24 Font B: 9x17 Font C: 9 x 24 KOR, CHN, JPN: 24 x 24
Characters Per Line	SRP-350plusIII: Font A: 42 Font B, C: 56 KOR, CHN, JPN: 21 SRP-352plusIII: Font A: 48 Font B, C: 64 KOR, CHN, JPN: 24	SRP-F310II: Font A: 42 Font B, C: 56 KOR, CHN, JPN: 21 SRP-F312II: Font A: 48 Font B, C: 64 KOR, CHN, JPN: 24 SRP-F313II: Font A: 53 Font B, C: 71 KOR, CHN, JPN: 26	SRP-380: Font A: 42 Font B, C: 56 KOR, CHN, JPN: 21 SRP-382: Font A: 48 Font B, C: 64 KOR, CHN, JPN: 24
Character Sets	Alphanumeric: 95 Extended Graphics: 128 x 33 page International: 32	Alphanumeric: 95 Extended Graphics: 128 x 33 page International: 32	Alphanumeric: 95, Extended Graphics: 128 x 35 page International: 32 Unicode : UTF-8, UTF-16, UTF-32
Graphics	Supporting user-defined fonts, graphics, formats and logos	Supporting user-defined fonts, graphics, formats and logos	Supporting user-defined fonts, graphics, formats and logos
Barcode Symbologies	1D: Coda Bar, Code 39, Code 93, Code 128, EAN-8, EAN-13, ITF, UPC-A, UPC-E 2D: Data Matrix, PDF417, QR code	1D: Coda Bar, Code39, Code93, Code128, EAN-8, EAN-13, ITF, UPC-A, UPC-E 2D: Data Matrix, PDF417, QR Code	1D: Coda Bar, Code 39, Code 93, Code 128, EAN-8, EAN-13, ITF, UPC-A, UPC-E 2D: Data Matrix, GS1-128, GS1 DataBar Stacked / Omnidirectional / Truncated / Limited / Expanded, PDF417, QR code
<b>Accessories / Warranty</b>			
Standard	-	3 inch Partition (83 mm)	2 inch Partition (58 mm)
Optional	Splash Proof Cover, External buzzer, B-Melodist, USB A-B Cable 1.8m, USB to Serial cable, WLAN Dongle	External buzzer, B-Melodist, USB A-B Cable 1.8m, USB to Serial cable, WLAN Dongle, Powered USB 0.5m, Powered USB 1.2m	External buzzer, B-Melodist, USB A-B Cable 1.8m, Powered USB 0.5m, Powered USB 1.2m

# B-GATE & POS PRINTERS



	SRP-350plusIII	SRP-350III	SRP-330II
<b>Print Characteristics</b>			
Print Method	Direct Thermal	Direct Thermal	Direct Thermal
Print Speed	SRP-350plusIII: Up to 300 mm/sec SRP-352plusIII: Up to 270 mm/sec	SRP-350III: Up to 250 mm/sec SRP-352III: Up to 230 mm/sec	Up to 220 mm/sec
Print Resolution	SRP-350plusIII: 180 dpi SRP-352plusIII: 203 dpi	SRP-350III: 180 dpi SRP-352III: 203 dpi	SRP-330II: 180 dpi SRP-332II: 203 dpi
Print Width	Up to 72 mm	Up to 72 mm	Up to 72 mm
Sensor	Paper End, Paper Near End, Cover Open	Paper End, Paper Near End, Cover Open	Paper End, Cover Open
<b>Media Characteristics</b>			
Media Type	Receipt	Receipt	Receipt
Media Width	80 mm Optional 58 mm (N type)	80 mm Optional 58 mm (N type)	80 mm Optional 58 mm (N type)
Media Roll Diameter	Up to 83 mm	Up to 83 mm	Up to 80 mm
Media Thickness	0.062 ~ 0.075 mm	0.062 ~ 0.075 mm	0.062 ~ 0.075 mm
Supply Method	Easy Paper Loading	Easy Paper Loading	Easy Paper Loading
<b>Physical Characteristics</b>			
Dimensions (W x D x H)	145 x 200 x 146 mm (5.70 x 7.87 x 5.74 inch)	145 x 204 x 146 mm (5.70 x 8.03 x 5.74 inch)	145 x 198 x 146 mm (5.72 x 7.79 x 5.74 inch)
Weight	1.56 kg(3.43 lbs.)	1.55kg(3.41 lbs.)	1.37 kg (3.02 lbs.)
Power	EnergyStar Certified, External Power Adaptor 100-240V AV, 50/60Hz	EnergyStar Certified, External Power Adaptor 100-240V AV, 50/60Hz	EnergyStar Certified, External Power Adaptor 100-240V AV, 50/60Hz
Drawer Port	2 ports (Via y-type adaptor)	2 ports (Via y-type adaptor)	2 ports (Via y-type adaptor)
<b>Performance Characteristics</b>			
NV Image Memory	768 Kbytes (Mono)	256 Kbytes (Mono)	768 Kbytes (Mono)
Receive Buffer	4 Kbytes	4 Kbytes	4 Kbytes
User Define Buffer	12 Kbytes	12 Kbytes	12 Kbytes
Interface	Standard: USB V2.0 FS + Ethernet Optional: USB V2.0 FS + Ethernet + Serial / Parallel / WLAN <sup>1</sup> / Bluetooth <sup>2</sup> / Powered USB  WLAN <sup>1</sup> : 802.11b/g/n Bluetooth: V2.1+ EDR, Class 1, MFi certified	① USB V2.0 FS + Serial ② USB V2.0 FS + Parallel ③ USB V2.0 FS + Ethernet	① USB V2.0 FS + Ethernet + Serial ② USB V2.0 FS + Serial ③ USB V2.0 FS + Parallel ④ USB V2.0 FS + SD
<b>Environment Characteristics</b>			
Temperature	Operating: 0 ~ 40°C (32 ~ 104°F) Storage: -20 ~ 60°C (-4 ~ 140°F)	Operating: 0 ~ 40°C (32 ~ 104°F) Storage: -20 ~ 60°C (-4 ~ 140°F)	Operating: 0 ~ 40°C (32 ~ 104°F) Storage: -20 ~ 60°C (-4 ~ 140°F)
Humidity	Operating: 10 ~ 80% RH Storage: 10 ~ 90% RH	Operating: 10 ~ 80% RH Storage: 10 ~ 90% RH	Operating: 10 ~ 80% RH Storage: 10 ~ 90% RH
<b>Reliability</b>			
Thermal Print Head (TPH)	150 km	150 km	150 km
Auto Cutter	1.8 Million Cuts	1.8 Million Cuts	1.5 Million Cuts
<b>Software</b>			
Emulation	BXL / POS	BXL / POS	BXL / POS
Driver / Utility	Windows Driver, OPOS Driver, JPOS Driver, Linux / Mac CUPS Driver, Virtual COM USB/Ethernet Driver, Utility Program, Web Driver	Windows Driver, OPOS Driver, JPOS Driver, Linux / Mac CUPS Driver, Virtual COM USB/Ethernet Driver, Utility Program, Web Driver	Windows Driver, OPOS Driver, JPOS Driver, Linux / Mac CUPS Driver, Mac Driver, Virtual COM USB/Ethernet Driver, Utility Program, Web Driver
SDK / Plugin	iOS SDK, Android SDK, Windows SDK, Windows Runtime SDK, Linux SDK, Xamarin, Cordova, Chrome	iOS SDK, Android SDK, Linux SDK, Xamarin, Cordova, Chrome	iOS SDK, Android SDK, Linux SDK, Xamarin, Cordova, Chrome
<b>Fonts / Graphics / Symbologies</b>			
Character Size	Font A: 12 x 24 Font B: 9 x 17 Font C: 9 x 24 KOR, CHN, JPN: 24 x 24	Font A: 12 x 24 Font B: 9 x 17 Font C: 9 x 24 KOR, CHN, JPN: 24 x 24	Font A: 12 x 24 Font B: 9 x 17 Font C: 9 x 24 KOR, CHN, JPN: 24 x 24
Characters Per Line	SRP-350plusIII: Font A: 42 Font B, C: 56 KOR, CHN, JPN: 21 SRP-352plusIII: Font A: 48 Font B, C: 64 KOR, CHN, JPN: 24	SRP-350III: Font A: 42 Font B, C: 56 KOR, CHN, JPN: 21 SRP-352III: Font A: 48 Font B, C: 64 KOR, CHN, JPN: 24	SRP-330II: Font A: 42 Font B, C: 56 KOR, CHN, JPN: 21 SRP-332II: Font A: 48 Font B, C: 64 KOR, CHN, JPN: 24
Character Sets	Alphanumeric: 95 Extended Graphics: 128 x 33 page International: 32	Alphanumeric: 95 Extended Graphics: 128 x 33 page International: 32	Alphanumeric: 95 Extended Graphics: 128 x 33 page International: 32
Graphics	Supporting user-defined fonts, graphics, formats and logos	Supporting user-defined fonts, graphics, formats and logos	Supporting user-defined fonts, graphics, formats and logos
Barcode Symbologies	1D: Coda Bar, Code 39, Code 93, Code 128, EAN-8, EAN-13, ITF, UPC-A, UPC-E 2D: Data Matrix, PDF417, QR code	1D: Coda Bar, Code39, Code93, Code128, EAN-8, EAN-13, ITF, UPC-A, UPC-E 2D: Data Matrix, PDF417, QR Code	1D: Coda Bar, Code39, Code93, Code128, EAN-8, EAN-13, ITF, UPC-A, UPC-E 2D: Data Matrix, PDF417, QR Code
<b>Accessories</b>			
Standard	Cable-DK Gender	-	2 inch Partition (58 mm), USB A-B Cable 1.8m
Optional	Splash Proof Cover, External buzzer, B-Melodist, USB A-B Cable 1.8m, Powered USB 0.5m, Powered USB 1.2m	Splash Proof Cover, External buzzer, B-Melodist, USB A-B Cable 1.8m	External buzzer, B-Melodist



	SRP-E300	STP-103III	SRP-275III	SRP-270
<b>Print Characteristics</b>				
Print Method	Direct Thermal(Top / Front Exit)	Direct Thermal	9 Pin Serial Dot Matrix	9 Pin Serial Dot Matrix
Print Speed	220 mm/sec	Up to 80 mm/sec	Up to 5.1 lps (at 40 columns)	Up to 4.6 lps
Print Resolution	SRP-E300 : 180dpi, SRP-E302 : 203dpi	203 dpi	80 dpi (horizontal), 144 dpi (vertical)	80 dpi (horizontal), 144 dpi (vertical)
Print Width	72mm	Up to 48 mm	Up to 63.5 mm	Up to 63.5 mm
Sensor	Paper End	Paper End, Paper Near End, Cover Open	Paper End, Paper Near End, Wall Mounting Paper Near End, Rear Cover Open, Black Mark	Paper End
<b>Media Characteristics</b>				
Media Type	Receipt	Receipt	Receipt	Receipt
Media Width	80 mm	57.5 mm	76.5 mm	76.5 mm
Media Roll Diameter	Up to 83 mm	Up to 60 mm	Up to 83 mm	Up to 83 mm
Media Thickness	0.062 ~ 0.075 mm	0.062 ~ 0.075 mm	0.06 ~ 0.085 mm	0.06 ~ 0.085 mm
Supply Method	Easy Paper Loading	Easy Paper Loading	Easy Paper Loading	Easy Paper Loading
<b>Physical Characteristics</b>				
Dimensions (W x D x H)	132 x 182.4 x 128.5 mm (5.19 x 7.18 x 5.05 inch)	116 x 180 x 90 mm (4.56 x 7.08 x 3.54 inch)	160 x 239 x 157 mm (6.29 x 9.40 x 6.18 inch)	160 x 249 x 130(A)/149(C)/160(D) mm (6.29 x 9.80 x 5.11(A)/5.86(C)/6.29(D) inch)
Weight	1.23kg(2.71 lbs.)	450 g (0.99 lbs.)	A: 2.4 kg (5.29 lbs.) C: 2.5 kg (5.51 lbs.)	2.3 kg (5.07 lbs.)
Power	EnergyStar Certified, External Power Adaptor 100-240V AV, 50/60Hz	External Power Adaptor 100-240V AV, 50/60Hz	EnergyStar Certified, External Power Supply Housed Internally (Adaptor 24V/2.5A), 50/60Hz	External Power Adaptor 100-240V AV, 50/60Hz
Drawer Port	2 ports (via y-type adaptor)	2 ports (Via y-type adaptor)	2 ports (Via y-type adaptor)	2 ports (Via y-type adaptor)
<b>Performance Characteristics</b>				
NV Image Memory	768 Kbytes (mono)	256 Kbytes (Mono)	256 Kbytes (Mono)	-
Receive Buffer	4 Kbytes	64 Kbytes	64 Kbytes	4 Kbytes
User Define Buffer	12 Kbytes	12 Kbytes	64 Kbytes	17 Kbytes
Interface	① USB V2.0 FS ② USB V2.0 FS + Ethernet + Serial	① USB V2.0 FS + Serial ② USB V2.0 FS + Parallel	① USB V2.0 FS + Serial + Ethernet* ② USB V2.0 FS + Parallel ③ USB V2.0 FS + Serial * DHCP enabled	USB V1.1 FS / Serial / Parallel / Ethernet
<b>Environment Characteristics</b>				
Temperature	Operating: 0 ~ 40°C (32 ~ 104°F) Storage: -20 ~ 60°C (-4 ~ 140°F)	Operating: 0 ~ 40°C (32 ~ 104°F) Storage: -20 ~ 60°C (-4 ~ 140°F)	Operating: 0 ~ 40°C (32 ~ 104°F) Storage: -20 ~ 60°C (-4 ~ 140°F)	Operating: 0 ~ 40°C (32 ~ 104°F) Storage: -20 ~ 60°C (-4 ~ 140°F)
Humidity	Operating: 10 ~ 80% RH Storage: 10 ~ 90% RH	Operating: 10 ~ 80% RH Storage: 10 ~ 90% RH	Operating: 10 ~ 80% RH Storage: 10 ~ 90% RH	Operating: 10 ~ 80% RH Storage: 10 ~ 90% RH
<b>Reliability</b>				
Thermal Print Head (TPH)	150km	50 km	300 Million Dots/Wire	300 Million Dots/Wire
Auto Cutter	1.5 Million Cuts	-	1.5 Million Cuts	0.5 Million Cuts
<b>Software</b>				
Emulation	BXL / POS	BXL / POS	BXL / POS	BXL / POS
Driver / Utility	Windows Driver, OPOS Driver, JPOS Driver, Linux / Mac CUPS Driver, Mac Driver, Virtual COM USB Driver, Utility Program, Web Driver	Windows Driver, OPOS Driver, JPOS Driver, Linux / Mac CUPS Driver, Virtual COM USB Driver, Utility Program	Windows Driver, OPOS Driver, JPOS Driver, Linux / Mac CUPS Driver, Virtual COM USB/Ethernet Driver, Utility Program, Web Driver	Windows Driver, OPOS Driver, Linux / Mac CUPS Driver, Virtual COM USB/Ethernet Driver, Utility Program
SDK / Plugin	iOS SDK, Android SDK, Windows SDK, Linux SDK, Xamarin SDK, Cordova Plugin, Chrome Plugin	Android SDK, Linux SDK	iOS SDK, Android SDK, Linux SDK, Windows SDK	Linux SDK
<b>Fonts / Graphics / Symbologies</b>				
Character Size	Font A: 12 x 24 Font B: 9 x 17 Font C: 9 x 24 KOR, CHN, JPN: 24 x 24	Font A: 12 x 24 Font B: 9 x 17 Font C: 9 x 24 KOR, CHN, JPN: 24 x 24	Font A: 9 x 9 Font B: 7 x 9 KOR: 17 x 9 CHN: 16 x 16	Font A: 9 x 9 Font B: 7 x 9 KOR: 17 x 9 CHN: 16 x 16
Characters Per Line	SRP-E300: Font A: 42 Font B, C: 56 KOR, CHN, JPN: 21 SRP-E302: Font A: 48 Font B, C: 64 KOR, CHN, JPN: 24	Font A: 32 Font B, C: 42 KOR, CHN, JPN: 16	Font A: 35 Font B: 40 KOR: 20 CHN: 22	Font A: 33 Font B: 40 KOR: 20 CHN: 22
Character Sets	Alphanumeric: 95 Extended Graphics: 128 x 35 page International: 32	Alphanumeric: 95 Extended Graphics: 128 x 33 page International: 32	Alphanumeric: 95 Extended Graphics: 128 x 27 page International: 48	Alphanumeric: 95 Extended Graphics: 128 x 7 page International: 32
Graphics	Supporting user-defined fonts, graphics, formats and logos	Supporting user-defined fonts, graphics, formats and logos	Supporting user-defined fonts, graphics, formats and logos	Supporting user-defined fonts, graphics, formats and logos
Barcode Symbologies	1D: Coda Bar, Code39, Code93, Code128, EAN-8, EAN-13, ITF, UPC-A, UPC-E 2D: Data Matrix, PDF417, QR Code	1D: Codabar, Code 39, Code 93, Code 128, EAN-8, EAN-13, ITF, UPC-A, UPC-E 2D: PDF417, QR code	-	-
<b>Accessories</b>				
Standard	USB A-B Cable 1.8m	-	-	-
Optional	External buzzer, B-Melodist	External buzzer, B-Melodist, USB A-B Cable 1.8m	Wall Mount, Splash Proof Cover, Ribbon Cartridge, B-Melodist, External Buzzer, USB A-B Cable 1.8m	Ribbon Cartridge, B-Melodist





# B-GATE & POS PRINTERS



Comparison Table of SRP-S300 Series

	SRP-S300T	SRP-S300TX	SRP-S300L	SRP-S300LX
Media Type	Sticky, Re-stick	Linerless Extreme	Sticky, Re-stick	Linerless Extreme
Taken Sensor	Supported		Not supported	

Comparison Table of SRP-Q300 Series

	SRP-QE300	SRP-Q300	SRP-Q300B	SRP-Q300H
				
Description	Economy Ver.	mPOS Printer	Q300 Built in Battery	B-gate mPOS Hub with Q300
Speed	200mm			220mm
Water and Dust	IP21	IP21		None
Dimension	128 x 125 x 125 mm (5.03 x 4.92 x 4.92 inch)		128 x 125 x 169.2 mm (5.03 x 4.92 x 6.66 inch)	128 x 125 x 160.2 mm (5.03 x 4.92 x 6.30 inch)
Weight	1.13kg (2.49 lbs.)	1.23kg (2.71 lbs.)	1.72kg (3.79 lbs.)	1.38kg (3.04 lbs)
Interface	USB V2.0 FS + Ethernet	Standard: USB V2.0 FS + Ethernet + 1 USB only Charging Optional: ① Standard + WLAN* ② Standard + Bluetooth V4.2 (Classic / LE)** * WLAN: 802.11a/b/g/n(2.4G+5G) ** Bluetooth: Class 1, MFi certified		4 USB Host ports(V2.0 HS) + 1 Device port(V2.0 HS) + 1 USB only Charging port + Ethernet + Bluetooth* V4.2 (Classic / LE)** / WLAN** * Bluetooth: Class 1, MFi certified **WLAN: 802.11a/b/g/n(2.4G+5G) USB dongle type(Optional)
NFC				
Unicode	Not supported			Supported
BCD-3000				

## On Board Type

Model	Interface
STP-103III	USB V2.0 FS + Serial, USB V2.0 FS + Parallel
SRP-330II	USB V2.0 FS + Ethernet + Serial, USB V2.0 FS + Serial, USB V2.0 FS + Parallel, USB V2.0 FS + SD
BGT-100P	3 USB Host ports + 1 Charging and Host port (V2.0 HS) + Device 1 port (V2.0 HS) + Ethernet + Bluetooth + WLAN
SRP-Q300	USB V2.0 FS + Ethernet + WLAN / Bluetooth
SRP-QE300	USB V2.0 FS + Ethernet
SRP-Q300H	4 USB Host ports(V2.0 HS) + 1 Device port (V2.0 HS) + 1 USB only Charging port + Ethernet + Bluetooth
SRP-275III	USB V2.0 FS + Serial + Ethernet, USB V2.0 FS + Parallel, USB V2.0 FS + Serial

## Interface Card Reference

Model	On board	Serial		Parallel		S+USB	USB		Ethernet	Wireless				B-gate	
		IFA-S V2	IFJ-SD	IFJ-S	IFA-P	IFJ-P	IFA-SU	IFA-U	IFJ-PW (Powered USB)	IFJ-E	IFJ-Bi (Bluetooth)	IFJ-Bt (Bluetooth)	IFJ-W (Wi-fi)	IFJ-WD (WiFi)	IFJ-BGT
SRP-270	X	•			•		•								
SRP-350III	USB		•	•		•			•						
SRP-350plusIII	USB, Ethernet			•		•		•			•	•	•	•	
SRP-F310II	USB, Ethernet		•	•		•					•	•	•	•	•
SRP-380	USB			•		•		•	•		•	•	•	•	
SRP-S300	USB			•		•		•	•		•	•	•	•	•



		BCD-2000	BCD-3000
<b>Display</b>			
Display Method		STN LCD	STN LCD
Display Color	Background / Text (Image)	Blue / White	Blue / White
Active Area	(W) x (H) mm	118.5 x 45.5	96 x 19.2
Visual Area	(W) x (H) mm	127.2 x 33.9	99 x 24
Brightness	(cd/m <sup>2</sup> )	100	100
Character Number	(Letters) x (Lines)	30 x 4	20 x 2
Character Type(Set)		95 Alphanumeric, 6 International	95 Alphanumeric, 6 International
Character Pattern	(W) x (H) dot	8 x 16, 9 x 17	8 x 16
Character Size	(W) x (H) mm	4.24 x 8.48	4.8 x 9.6
Character Space	(mm)	0.03	0.05
Receive Buffer	(byte)	1K	1K
Emulation		ESC/POS, CD5220, UTC Enhance, UTC Standard, PD6000	ESC/POS, CD5220, UTC Enhance, UTC Standard, PD6000
<b>Power &amp; Interface</b>			
Power	Voltage	USB: 5VDC±5% (USB Bus Power) RS232: 5VDC ~ 24VDC	USB: 5VDC±5% (USB Bus Power) RS232: 5VDC±5%
	Current	500mA	500mA
Interface		RS232/USB	RS232/USB
<b>Software</b>			
Windows Driver		Windows Driver, OPOS Driver	Windows Driver, OPOS Driver
SDK		Windows SDK, Android SDK, iOS SDK	Windows SDK, Android SDK, iOS SDK
<b>Exterior</b>			
Body Color		Ivory / Dark-Gray	Ivory / Black
Rotation Angle		Horizontal: +/-180° Vertical: 52° (5 positions)	Vertical: 35°
Overall Dimension		BCD-2000A/AU: 162.5 x 97.6 x 167-521 BCD-2000N/NU: 161 x 75.8 x 153-507 BCD-2000DS: 220.4 x 105.4 x 174-528 BCD-2000WA/WAU: 162.5x 166 x 189 BCD-2000WN/WNU: 161 x 152 x 178 BCD-2000WS: 220.4 x 173 x 193	130 x 110.3 x 68.5
Product weight	(g)	850	250
<b>Environment &amp; Reliability</b>			
Operating Temperature	(°C) / (°F)	0 ~ 40 / 32 ~ 104	0 ~ 40 / 32 ~ 104
Operating Humidity	(%)	10 ~ 80	10 ~ 80
Storage Temperature	(°C) / (°F)	-20 ~ 55 / -4 ~ 131	-20 ~ 55 / -4 ~ 131
Storage Humidity	(%)	10 ~ 90	10 ~ 90
Reliability (Display)	(hours)	50,000 (Backlight)	50,000 (Backlight)



To give the convenience with the best printer solution on the market, BIXOLON provides full support for industry standard development platforms.



		Mobile Printers					Label Printers							B-GATE & POS Printers & Peripherals														
		SPP-L3000	SPP-R410	SPP-R310 plus	SPP-R200III	SPP-R210	SLP-TX400	SLP-T400	SLP-TX420	SLP-TX220	SLP-DX420	SLP-DX220	SLP-DL410	SRP-E770III	SRP-Q300	SRP-QE300	SRP-S300	BGT-100P	SRP-F310III	SRP-380	SRP-350 plusIII	SRP-350III	SRP-330III	SRP-E300	STP-103III	SRP-275III	SRP-270	BCD-2000/3000
Windows Driver	Windows Server 2008 32 bit / 64 bit	•	•	•	•	•	•	•	•	•	•	•	•	•	•	•	•	•	•	•	•	•	•	•	•	•	•	•
	Windows Server 2008 R2 64 bit	•	•	•	•	•	•	•	•	•	•	•	•	•	•	•	•	•	•	•	•	•	•	•	•	•	•	•
	Windows 7 32 bit / 64 bit	•	•	•	•	•	•	•	•	•	•	•	•	•	•	•	•	•	•	•	•	•	•	•	•	•	•	•
	Windows 8 32 bit / 64 bit	•	•	•	•	•	•	•	•	•	•	•	•	•	•	•	•	•	•	•	•	•	•	•	•	•	•	•
	Windows Server 2012 64 bit	•	•	•	•	•	•	•	•	•	•	•	•	•	•	•	•	•	•	•	•	•	•	•	•	•	•	•
	Windows 10 32bit / 64 bit	•	•	•	•	•	•	•	•	•	•	•	•	•	•	•	•	•	•	•	•	•	•	•	•	•	•	•
OPOS Driver	Windows Server 2008 32 bit / 64 bit	•	•	•	•	•	•	•	•	•	•	•	•	•	•	•	•	•	•	•	•	•	•	•	•	•	•	•
	Windows Server 2008 R2 64 bit	•	•	•	•	•	•	•	•	•	•	•	•	•	•	•	•	•	•	•	•	•	•	•	•	•	•	•
	Windows 7 32 bit / 64 bit	•	•	•	•	•	•	•	•	•	•	•	•	•	•	•	•	•	•	•	•	•	•	•	•	•	•	•
	Windows 8 32 bit / 64 bit	•	•	•	•	•	•	•	•	•	•	•	•	•	•	•	•	•	•	•	•	•	•	•	•	•	•	•
	Windows Server 2012 64 bit	•	•	•	•	•	•	•	•	•	•	•	•	•	•	•	•	•	•	•	•	•	•	•	•	•	•	•
	Windows 10 32bit / 64 bit	•	•	•	•	•	•	•	•	•	•	•	•	•	•	•	•	•	•	•	•	•	•	•	•	•	•	•
JPOS Driver	Windows 7 32 bit / 64 bit		•	•	•	•									•	•	•	•	•	•	•	•	•	•	•			
	Windows 8 32 bit / 64 bit		•	•	•	•									•	•	•	•	•	•	•	•	•	•	•			
	Windows 10 32bit / 64 bit		•	•	•	•									•	•	•	•	•	•	•	•	•	•	•			
Linux CUPS Driver	Linux Kernel 2.6.32 and later	•	•	•	•	•	•	•	•	•	•	•	•	•	•	•	•	•	•	•	•	•	•	•	•	•	•	
	Linux Kernel 2.6.32 and later	•	•	•	•	•	•	•	•	•	•	•	•	•	•	•	•	•	•	•	•	•	•	•	•	•	•	
Mac Driver	Mac OS X 10.7, 10.8	•	•	•	•	•	•	•	•	•	•	•	•	•	•	•	•	•	•	•	•	•	•	•	•	•	•	
	Mac OS X 10.9	•	•	•	•	•	•	•	•	•	•	•	•	•	•	•	•	•	•	•	•	•	•	•	•	•	•	
	Mac OS X 10.10, 10.11	•	•	•	•	•	•	•	•	•	•	•	•	•	•	•	•	•	•	•	•	•	•	•	•	•	•	
Virtual COM Driver	Virtual COM USB Driver	•					•	•	•	•	•	•	•	•	•	•	•	•	•	•	•	•	•	•	•	•	•	•
	Virtual COM Ethernet Driver						•	•	•	•	•	•	•	•	•	•	•	•	•	•	•	•	•	•	•	•	•	•
Web Driver	Windows 7 32 bit / 64 bit	•	•	•	•	•	•	•	•	•	•	•	•	•	•	•	•	•	•	•	•	•	•	•	•	•	•	•
	Windows 8 32 bit / 64 bit	•	•	•	•	•	•	•	•	•	•	•	•	•	•	•	•	•	•	•	•	•	•	•	•	•	•	•
	Windows 10 32bit / 64 bit	•	•	•	•	•	•	•	•	•	•	•	•	•	•	•	•	•	•	•	•	•	•	•	•	•	•	•
iOS SDK	iOS 8.0 and later	•	•	•	•	•	•	•	•	•	•	•	•	•	•	•	•	•	•	•	•	•	•	•	•	•	•	•
	Android 2.3 and later		•	•	•	•																•	•					
	Android 3.1 and later	•					•	•	•	•	•	•	•	•													•	•
Android SDK	Android 4.0 and later														•	•	•	•	•	•		•	•	•	•			
	Windows Server 2008 32 bit / 64 bit	•	•	•	•	•	•	•	•	•	•	•	•	•	•	•	•	•	•	•	•	•	•	•	•	•	•	•
	Windows Server 2008 R2 64 bit	•	•	•	•	•	•	•	•	•	•	•	•	•	•	•	•	•	•	•	•	•	•	•	•	•	•	•
Windows SDK	Windows 7 32 bit / 64 bit	•	•	•	•	•	•	•	•	•	•	•	•	•	•	•	•	•	•	•	•	•	•	•	•	•	•	•
	Windows 8 32 bit / 64 bit	•	•	•	•	•	•	•	•	•	•	•	•	•	•	•	•	•	•	•	•	•	•	•	•	•	•	•
	Windows Server 2012 64 bit	•	•	•	•	•	•	•	•	•	•	•	•	•	•	•	•	•	•	•	•	•	•	•	•	•	•	•
	Windows 10 32bit / 64bit	•	•	•	•	•	•	•	•	•	•	•	•	•	•	•	•	•	•	•	•	•	•	•	•	•	•	•
	Windows CE 5.0 and later	•	•	•	•	•	•	•	•	•	•	•	•	•														
Windows SDK (CE/Mobile)	Windows Mobile 5.0 and later	•	•	•	•	•	•	•	•	•	•	•	•															
	Windows 10 32 bit / 64 bit		•	•	•	•									•	•	•	•	•	•	•	•	•	•	•	•	•	•
Xamarin SDK	Android 4.0 and later		•	•	•	•									•	•	•	•	•	•	•	•	•	•	•	•	•	•
	iOS 8.0 and later		•	•	•	•									•	•	•	•	•	•	•	•	•	•	•	•	•	•
	Windows 10 32 bit / 64 bit		•	•	•	•									•	•	•	•	•	•	•	•	•	•	•	•	•	•
Cordova SDK	Android 4.0 and later		•	•	•	•									•	•	•	•	•	•	•	•	•	•	•	•	•	•
	iOS 8.0 and later		•	•	•	•									•	•	•	•	•	•	•	•	•	•	•	•	•	•
	Chrome Browser V37 and later														•	•	•	•	•	•	•	•	•	•	•	•	•	•
Windows Runtime SDK	Windows 8.1 RT 32 bit / 64 bit				•	•																						
Windows Phone SDK	Windows Phone 8 / 8.1				•																							

\* SDK : Software Development Kit

**BIXOLON Europe GmbH**

Tiefenbroicher Weg 35, 40472 Düsseldorf, Germany

Tel +49 211 68 78 54 0

Fax +49 211 68 78 54 20

[www.BixelonEU.com](http://www.BixelonEU.com)



**BIXOLON Co.,Ltd.**

7~8F, (Sampyeong-dong), 20, Pangyoyeok-ro

241beon-gil, Bundang-gu, Seongnam-si,

Gyeonggi-do, 13494, Korea (ROK)

Tel +82 (0) 31 218 5500

Fax +82 (0) 31 218 5589

[www.Bixelon.com](http://www.Bixelon.com)



**BIXOLON America Inc.**

13705 Cimarron Ave Gardena, CA 90249

Tel +1 858 764 4580

Fax +1 310 257 6869

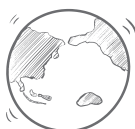
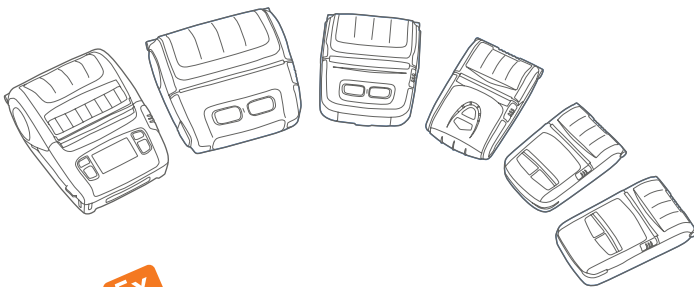
[www.BixelonUSA.com](http://www.BixelonUSA.com)



**BR-GUIDE-EN-SEP18-BXE-V1-NF**

Copyright © BIXOLON Co., Ltd. All rights reserved.

Features and specifications are subject to change without prior notice.



5x

**The World's No.1**  
Mobile Receipt Printer Manufacturer

**BIXOLON®**  
a Better Solution for your Business™