



Zebra® iMZ220™ and iMZ320™ Printers



SEE MORE. DO MORE.



A choice of mobile platforms to take business where it needs to go!

Get the benefits and value associated with using today's smartphone and tablet devices. The new iMZ™ printers now support Bluetooth® connectivity to Apple® iOS, as well as Android™, WinMobile and BlackBerry® platforms. Print Touch™ simplifies Bluetooth pairing and launches Web-based help pages with Near Field Communication (NFC)-enabled devices to provide a trouble-free user experience. Regardless of your choice, a smartphone, tablet or handheld, Zebra's new iMZ220 and iMZ320 printers are there to support your 48mm and 74mm receipt-printing business needs.

The iMZ printers support the most popular operating systems of today's smartphones and tablets. The printers

also use Zebra's Link-OS™ environment: an open platform that pairs an operating system for smart Zebra devices with powerful software apps. Using Profile Manager with AirWatch® Connector, you can quickly connect your printer with the AirWatch device-management system via WLAN. Use your current infrastructure with one tool for management of your mobile devices.

Building on this experience, you can create printing applications for the Apple, Windows®, Android, WinCE, WinMobile and BlackBerry platforms with the Link-OS Software Development Kit (SDK). Backed by a full range of Zebra software, it has never been easier to produce crisp, clear receipts – whatever the setting.

Ideal for:

- **Retail**
 - Mobile point of sale, restaurant tableside receipts
 - Queue-busting
- **Mobile workforce**
 - Utility billing/meter-reading, field repair/installations, parking violations
- **Transport & Logistics**
 - Onboard transportation ticketing, proof of delivery, delivery-failure notices, route sales

Genuine Zebra supplies

Ensure high-quality, crisp images and text, and ensure that your receipts and documents remain readable and intact for their entire life by choosing genuine Zebra supplies.

- Both in-stock and custom-made receipt paper
- Materials that are tested and approved by the Zebra Supplies Research and Development Department; meet your application's durability, image-quality and archival requirements (as well as your budget); and can be custom-preprinted with your company logo, instructions, terms and conditions and other information, allowing you to maximise the functionality of your receipts and documents

For details, contact your authorised reseller, or go to zebra.com for more details.



MEET THE iMZ SERIES!

The iMZ series: powerful Zebra printing in the palm of your hand. Entry-level mobile receipt printers for simple document printing.

Sleek, subtle sidekicks

Each small iMZ printer can be a smart assistant for any mobile receipt-printing application where quick, simple receipts are needed on demand. These unobtrusive printers can be worn comfortably for a full shift without interfering with the user's tasks. Easy to operate, they are a great first step for users looking to replace pen-and-paper documentation, preprinted receipts, or unreliable mobile printers. Mobile workforces all over the world can benefit from the iMZ series' compact convenience in business applications – and because it's a Zebra, there's no compromise on reliability.

A sidekick that won't weigh you down

- At 0.34kg or less, these lightweight printers can be worn a full shift without any burden or bother
- Comfortably wear the printer via belt clip or shoulder strap for unobtrusive and convenient printing

Simple to operate

- Single push-button media access for simple reloading
- Intuitive LEDs indicate on/off, error, and connectivity status

Economical alternative

- A simple, reliable and affordable printer alternative
- Each iMZ printer comes standard with USB and Bluetooth connectivity, allowing you to communicate with mobile devices running on iOS, WinMobile, Android and BlackBerry operating systems

Palm-sized printing power

- High-speed processor and extensive memory for printing complex barcodes, fonts and graphics
- iMZ printers now come with an 802.11n option with dual-band support (2.4 GHz – 802.11 b/g/n and 5GHz – 802.11 a/n) for those overcrowded wireless networks in retail environments where business operations need communication at the less-crowded 5GHz band
- Secure Bluetooth 2.0, 802.11a/b/g/n (optional) or USB (client) connectivity, Wi-Fi® and Cisco® CCX V4 ASD-certified



This mini Zebra printer offers compact, 48mm-wide receipt printing, ideal for mobile POS and field sales/service applications.



PRINT RECEIPTS ON DEMAND FOR A VARIETY OF APPLICATIONS

Retail mobile POS

Scan a basket of goods and print a barcoded receipt to reduce the amount of time a customer is at the register, and improve the rate at which queues are processed.

Citations

Clear thermal printing on speciality weatherproof material means you collect more fines.

Hospitality

Reduce queues and capture more sales: accept mobile payment for concessions in the theme park, in the arena, at the tableside or at other hospitality venues.

Transportation

Provide convenience for your passengers: print tickets or payment receipts in taxis, trains, boats or buses!

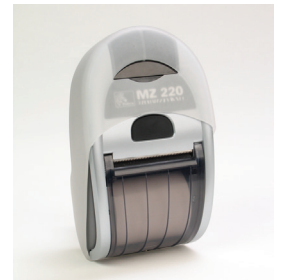
AC adaptor

This easy-to-use power adaptor comes with each iMZ series printer. Simply plug the AC adaptor into the printer and charge between uses!



Protective silicone skins

These optional silicone skins add a layer of protection and improve the handling of your iMZ series printer.



iMZ series 4-bay power station

Ideal for users who prefer to “dock and go”. At the end of your shift, simply slide the iMZ220 or iMZ320 printer into this power station to recharge it.



Durability-enhancing cases

By adding an extra layer of protection with this nylon carrying case, your iMZ series printer will be well prepared for harsh conditions.



Vehicle adaptor

This cigarette-lighter adaptor allows you to charge your iMZ series mobile printer from your vehicle.



Shoulder strap

To keep hands free, an optional shoulder strap is available as an alternative to the belt clip.



SPECIFICATIONS AT A GLANCE*

Printer Name

- iMZ220 printer
- iMZ320 printer

Standard Features

- Direct-thermal printing of barcodes, text and graphics
- 203dpi resolution (8 dots/mm)
- Print speed: up to 102mm/s (4 ips)
- CPCL and ZPL™ programming languages
- Resident fixed and scalable fonts
- 400MHz 32-bit ARM® processor with 128MB RAM
- 128MB flash supports downloadable programs, receipt formats, fonts, and graphics
- USB port
- 1.6Ahr Li-Ion battery
- Built-in battery charger
- Optical out-of-media sensing using fixed centre-position sensor
- Tear bar for easy receipt dispensing
- Supports vertical and horizontal printing
- Printer can be used in any orientation
- Fixed media-roll width
- "Clamshell" design for easy media loading
- Management: Mirror, SNMP, Web server (with customisable HTML pages), Wavelink Avalanche® [Future firmware update]
- Four LEDs as user interface indicators
- 1.2m (4') drop to concrete (multiple times)
- Label odometer
- Bluetooth 2.1
- Security modes 1-4
- Bluetooth printing from Apple devices (iOS5, iOS6, iOS7)
- IP42-rated for dust- and water-resistance (IP54 with durability-enhancing case)
- Print Touch via NFC

Printer Specifications

Resolution

203dpi/8 dots per mm

Memory

128MB RAM; 128MB flash

Print width

- iMZ220: 48.3mm/1.9"
- iMZ320: 73.7mm/2.9"

Print length

Maximum: Continuous

Print speed

Up to 102mm/4" per second

Physical Characteristics

	iMZ220	iMZ320
Width:	80.77mm/3.18"	104.4mm/4.11"
Height:	135.6mm/5.34"	135.6mm/5.34"
Depth:	57.4mm/2.26"	57.4mm/2.26"
Weight:	0.32kg/0.70lb with battery	0.34kg/0.75lb with battery

- For applications that require more content to be printed, opt for the 73.7mm print-width iMZ320 printer

Operating Characteristics

Environment

- Operating temperature: -10°C/14°F to 50°C/122°F
- Storage environment: -20°C/-4°F to 60°C/140°F
- Operating humidity 10-90% non-condensing

Agency approvals

FCC Part 15 and EN 55022 Class B limits; FCC, IC, and European Standards for Bluetooth and 802.11a/b/g/n; TÜV and IEC 60950 standard for Safety; NOM, C-Tick, VCCI, S-Mark, PSE, CCC, MII Bluetooth SIG-registered, CCX and Wi-Fi-certified

Communication and Interface Capabilities

- ZebraNet™ 802.11a/b/g/n radio with support for:
 - WEP, TKIP and AES encryption (802.1x)
 - EAP-FAST, EAP-TTLS, EAP-TLS, PEAP, LEAP
 - 802.11i (WPA2), 802.11d, 802.11h
 - 802.11n (optional): Wi-Fi (802.11n)-certified, Cisco CCX v4 ASD-certified
- USB 2.0
- Bluetooth 2.1 (includes Bluetooth support for iOS devices)
- Windows compatibility: (CE .NET, Pocket PC, Windows Mobile 2002, Windows Mobile 2003 SE, Windows XP, 2000 and NT via Zebra Windows printer driver and/or our Mobile SDK controls and other applications)
- Android 2.3, 4.0, 4.1
- iOS 7, iOS 6, iOS 5
- Dual radio 802.11a/b/g/n & Bluetooth 3.0 radio

Media Characteristics

Max. roll size

- 47.8mm/1.88" O.D. on a 10.2mm/0.4" to 19mm/0.75" I.D. core

Max. media width (iMZ220)

50.8mm (± 0.76mm)/2.0" (± 0.03")

Max. media width (iMZ320)

76.2mm (± 0.76mm)/3.0" (± 0.03")

Thickness

0.0508mm/2 mil to 0.1016mm/4 mil

Media types

Direct-thermal receipt paper, or UV coated media. For optimum print quality and printer performance, use genuine Zebra supplies

Made for

 iPod  iPhone  iPad

Fonts/Graphics/Symbologies

Fonts and character sets

- Standard fonts: 25 bitmapped, 1 smooth-scalable (CG Triumvirate™ Bold Condensed)
- Optional fonts: Downloadable bitmapped and scalable fonts
- International character sets/code pages supported:

USA, Germany, France, Sweden, Spain, Norway, Italy, CP850, UK, (Latin 9), Chinese GB18030, BIG 5 (Traditional), Japanese and Korean supported in 16 x 16 and 24 x 24. Thai and others upon request

Graphics features

Supports user-defined fonts and graphics – including custom logos

Barcode symbologies

- Barcode ratios: 1.5:1, 2:1, 2.5:1, 3:1, 3.5:1
- Linear barcodes: Codabar (NW-7), Code 39, Code 93, Code 128, EAN-8, EAN-13, 2 and 5 digit add-on, Interleaved 2-of-5, UCC/EAN 128, UPC-A, UPC-E, 2 and 5 digit add-on
- Two-dimensional: Aztec Code, Data Matrix, GS1/DataBar™ (RSS) family, MaxiCode, MicroPDF417, PDF417, QR Code, TLC 39

Options and Accessories

- Bluetooth 2.1 connectivity
- 802.11n (a/b/g/n) connectivity
- Protective silicone skin
- Durability-enhancing case (IP54 rating when using the case)
- Shoulder strap
- iMZ series 4-bay power station
- Vehicle adaptor

Optional Features

- Linerless printing (with silicone platen roller only) through CAG (Custom Application Group) request
- ZBI 2.x: Powerful programming language that lets printers run standalone applications, connect to peripherals, and much more

Software Solutions

- Document design: Quickly design a customised print solution using your business data and Zebra's intuitive plug-and-print design tools
- Device integration: Zebra offers apps and products designed to help you integrate Zebra devices into your existing systems
- Device management: Manage your print operations locally and globally with Zebra's suite of device-management tools
- Developer tools: Provide you with the tools you need to create your own apps, including documentation, source code, programming languages, templates and more

Firmware

- ZPL II™
- CPCL
- Zebra Unicode Solution
- ZBI 2.0™ (optional)

Testing

The iMZ series printers have been tested with industry-leading applications to verify interoperability and improve overall optimisation when with validated terminals. Zebra Independent Software Vendor (ISV) Partners create industry-leading software solutions to solve business problems. Zebra works closely with these ISVs to integrate printing and other capabilities of Zebra products. Zebra-validated applications can be found at zebra.com/validation



Zebra Technologies – EMEA Headquarters & Sales Office

Zebra Technologies Europe Limited, Dukes Meadow, Millboard Road, Bourne End, Buckinghamshire, SL8 5XF, United Kingdom
Telephone: +44 (0)1628 556000 **Fax:** +44 (0)1628 556001 **Email:** mseurope@zebra.com **Web:** www.zebra.com

Other EMEA Locations

Europe: France, Germany, Italy, the Netherlands, Poland, Russia, Spain, Sweden, Turkey
Middle East & Africa: Dubai, South Africa

*Specifications subject to change without notice.

©2013 ZIH Corp. Link-OS, Print Touch, ZBI-Developer, ZebraDesigner, ZebraLink, ZebraNet, ZPL and all product names and numbers are Zebra trademarks, and Zebra and representation of Zebra Head are registered trademarks of ZIH Corp. All rights reserved. Bluetooth is a registered trademark of Bluetooth SIG, Inc. Apple is a trademark of Apple, Inc., registered in the U.S. and other countries. Android is a trademark of Google Inc. BlackBerry is a registered trademark of Research In Motion. Windows is a registered trademark of Microsoft Corporation in the United States and/or other countries. Wi-Fi and the Wi-Fi logo are registered trademarks of the Wi-Fi Alliance. Cisco and the Bridge logo are registered trademarks of Cisco Systems, Inc. ARM is a registered trademark of Arm Limited. Wavelink Avalanche is a registered trademark of Wavelink Corporation. CG Triumvirate is a trademark of Monotype Imaging, Inc. and may be registered in certain jurisdictions. GS1 DataBar is a trademark of GS1 US, Inc. All other trademarks are the property of their respective owners. "Made for iPod," "Made for iPhone," and "Made for iPad" mean that an electronic accessory has been designed to connect specifically to iPod, iPhone, or iPad, respectively, and has been certified by the developer to meet Apple performance standards. Apple is not responsible for the operation of this device or its compliance with safety and regulatory standards. Please note that the use of this accessory with iPod, iPhone, or iPad may affect wireless performance. AirWatch is a trademark of AirWatch, LLC. All other trademarks are the property of their respective owners.



800 729 0236
www.logiscenter.us



0241 9550 9225
www.logiscenter.de



01 82 88 44 70
www.logiscenter.fr



020 3318 8265
www.logiscenter.co.uk



0720 115814
www.logiscenter.at



02 58 80 583
www.logiscenter.be



911 433 048
www.logiscenter.com



02 4792 1697
www.logiscenter.it



308 800 842
www.logiscenter.pt

About LOGISCENTER

Logiscenter is the leading provider of automatic identification and data capture equipments. Our products include barcode printing and reading devices, mobile computing devices, wireless access points, identification cards, and consumables.

Reasons to work with us

Our customers come first. Our objective is not only selling our products but also holding a long-lasting relationship with our customers, based on the benefits and advantages we create for you and your company.

The best brands. We offer products from the best manufacturers worldwide.

Expert technical support team. Our support staff are experts in the products we sell. But not just the products, they can tell you the best solution for your particular problem or need.

Largest stock. We have a permanent stock of more than 60,000 products.

Same-day shipping. For all orders placed and confirmed before 16:00 on working days.

Best prices. With Logiscenter, you can be sure that you are paying a fair price for your products, we will not overcharge you.

Easy returns. Damaged or defective products can be returned easily, for an exchange or reimbursement.



All Brands Technical Service

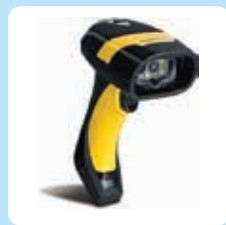
Our Brands



Solutions for: Industry • Consumer • Mobility Transportation and Logistics • Retail • Health



Label printers



Barcode readers



Data terminals & PDA



PVC card printers



RFID



Consumables
(labels, ribbons, PVC cards)